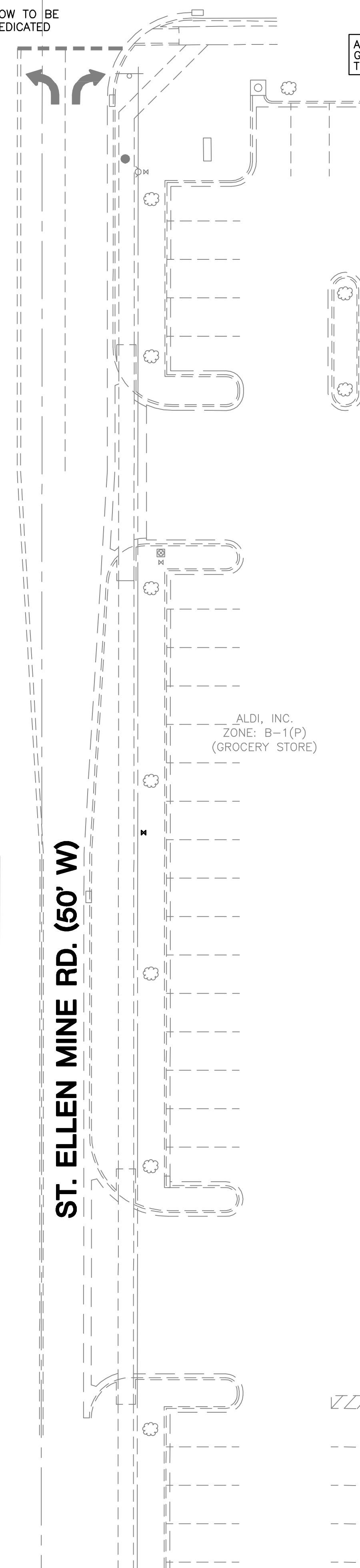
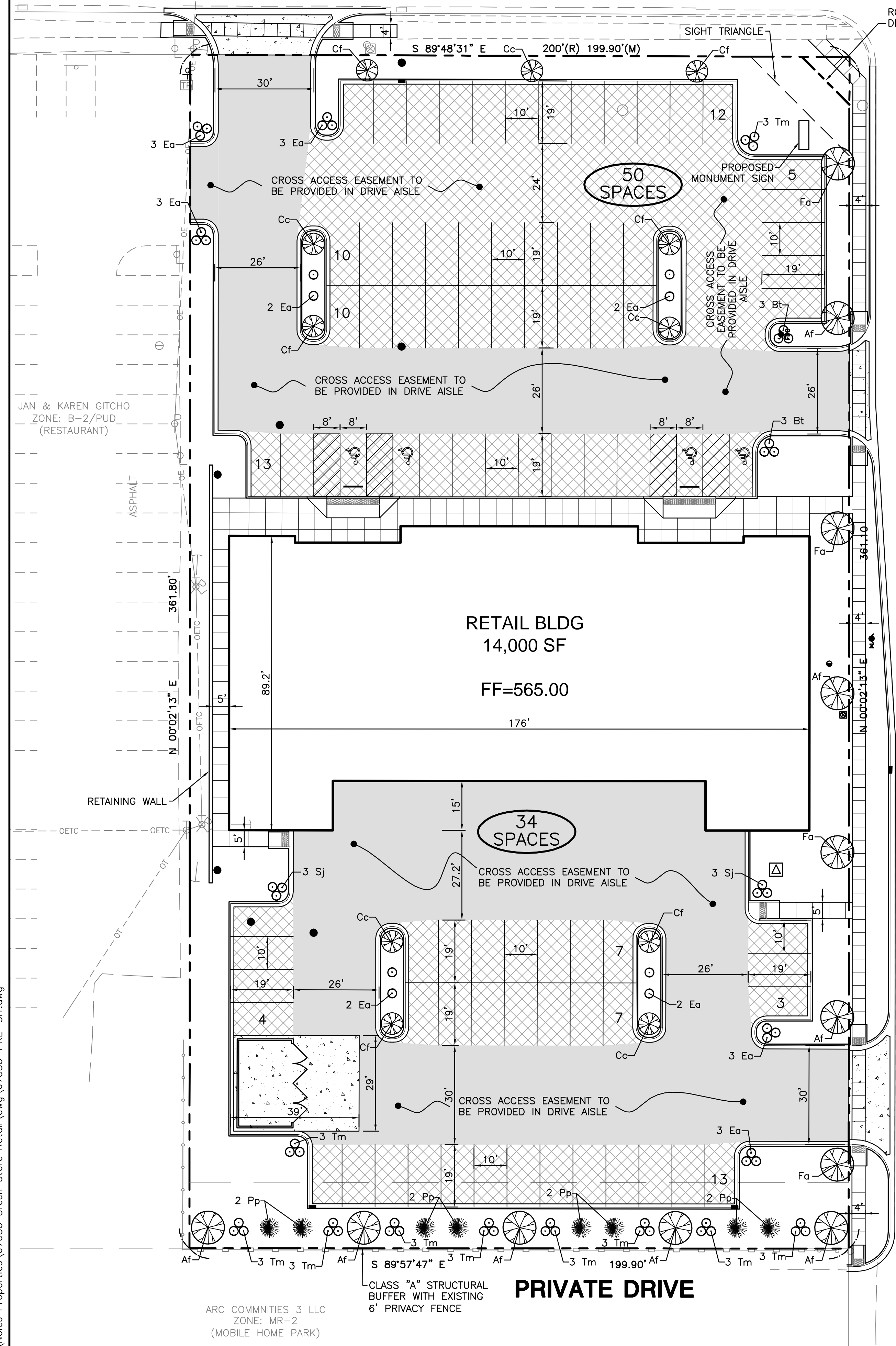


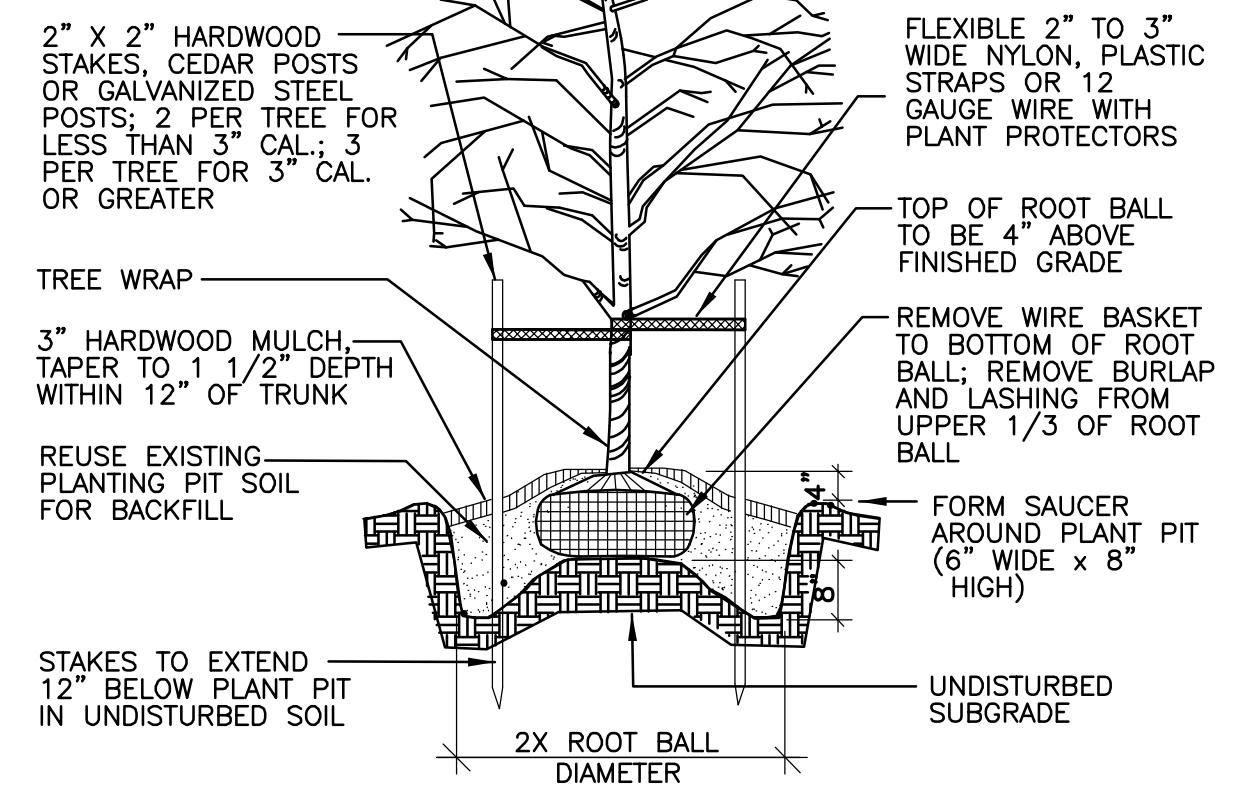


**HIGHWAY 50 (WIDTH VARIES)**

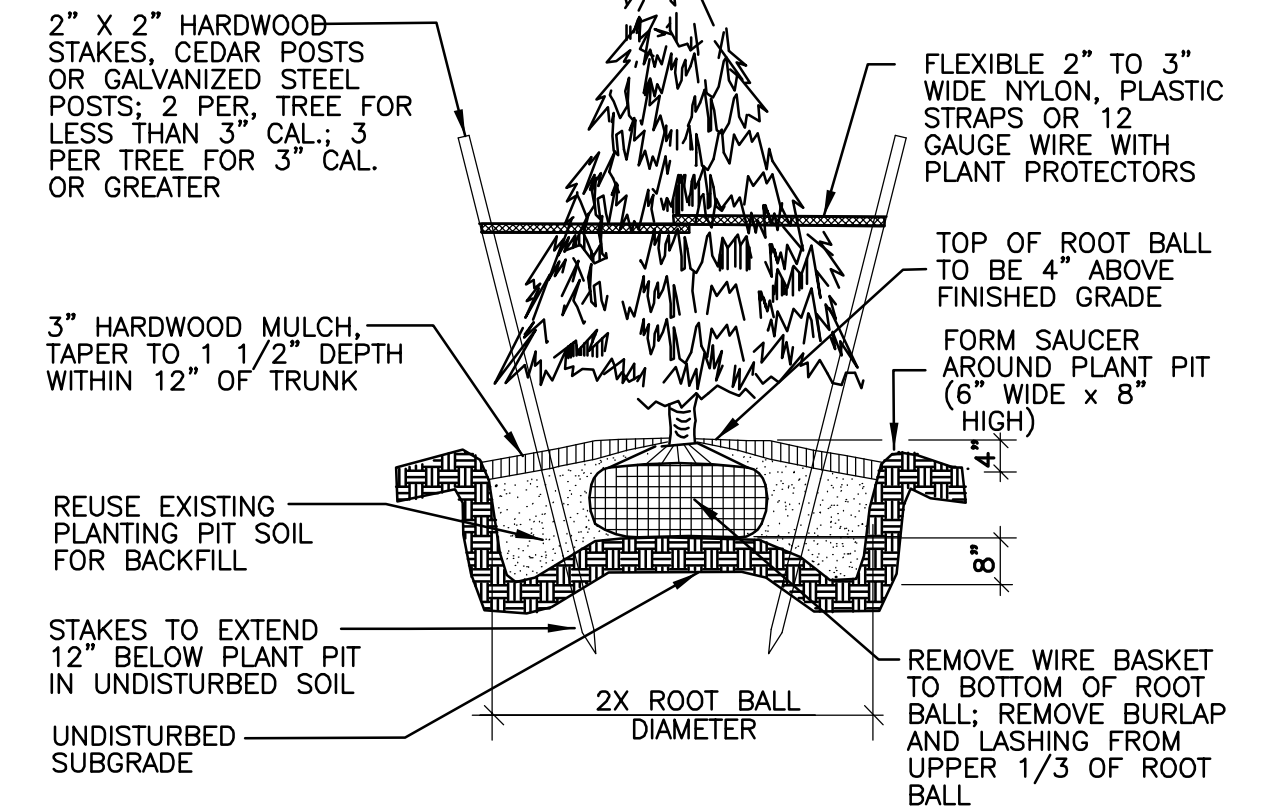
**PROPOSED SITE PLAN**  
PART OF LOT 6 OF ST. ELLEN'S TRACTS SUBDIVISION



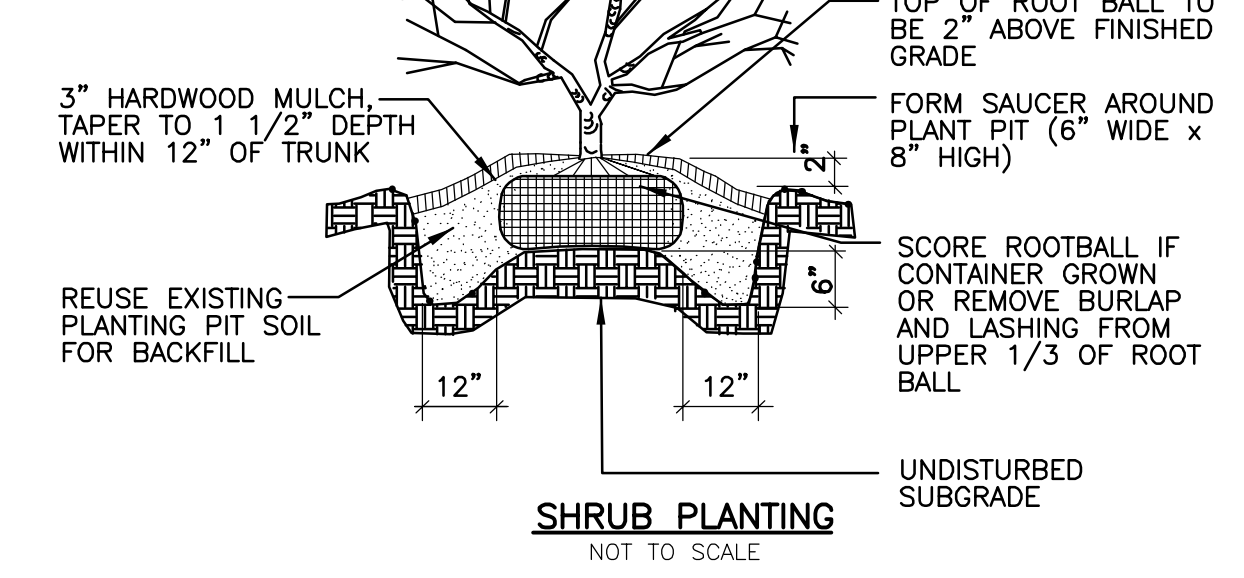
ALL PLANTS TO BE NURSERY GROWN STOCK IN SOIL SIMILAR TO SITE CONDITIONS



ALL PLANTS TO BE NURSERY GROWN STOCK IN SOIL SIMILAR TO SITE CONDITIONS



ALL PLANTS TO BE NURSERY GROWN STOCK IN SOIL SIMILAR TO SITE CONDITIONS



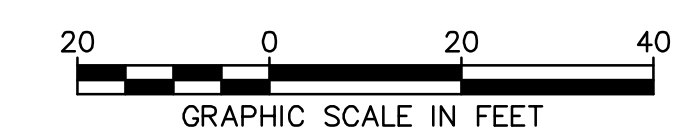
**LEGEND**

SYMBOL	DESCRIPTION		
	CANOPY TREE		CONCRETE PAVEMENT
	EVERGREEN TREE		HEAVY-DUTY PAVEMENT
	ORNAMENTAL TREE		LIGHT-DUTY PAVEMENT
	SHRUBS		

KEY	QUANTITY	SCIENTIFIC NAME	COMMON NAME	SIZE	CONDITION	REMARKS
<b>EVERGREEN TREES</b>						
Pp	8	Pinaceae Picea pungens	Blue Spruce	6' Tall	B&B	
<b>CANOPY TREES</b>						
Af	8	Acer Fermanii	Red Maple	2 1/2" Caliper	B&B	
Fa	4	Fraxinus americana	White Ash	2.0" Caliper	B & B	
<b>ORNAMENTAL TREES</b>						
Cf	6	Cornus florida	White Flowering Dogwood	1 1/2" Caliper	B&B	
Cc	5	Cercis canadensis	Eastern Redbud	1 1/2" Caliper	B&B	
<b>SHRUBS</b>						
Tm	30	Taxus x media 'Densiformis'	Dense Yew	36" Height	B&B	
Sj	6	Spiraea japonica	Little Princess Spirea	24" Height	No. 3 Container	
Bt	6	Berberis thunbergii	Red Barberry	24" Height	No. 3 Container	
Ea	23	Euonymus alatus "Compacta"	Compact Burning Bush	24" Height	No. 3 Container	

**NOTES**

SEE C000 FOR SYMBOLOGY LEGEND.  
ALL DIMENSIONS ARE TO THE FACE OF CURB UNLESS OTHERWISE NOTED.  
ALL RADII ARE 3 FEET UNLESS OTHERWISE NOTED.  
ALL RADII ARE TO THE BACK OF CURB UNLESS OTHERWISE NOTED.



No.	DATE	REVISION
	11/27/07	REVISED PER CITY COMMENTS
	11/21/07	REVISED PER CITY COMMENTS
	10/30/07	REVISED PER CITY COMMENTS
	10/10/07	REVISED PER CITY COMMENTS

PROJECT No: 67353  
DATE: SEP 2007

DES: JFS  
DR: DMB  
CKD: JFS

WOOLPERT, INC.  
343 Fountains Parkway, Suite 100  
Fairview Heights, Illinois  
62208-2044  
618-632.7004  
618-632.0100



**NOLES PROPERTIES**

U.S. HIGHWAY 50 & ST. ELLEN MINE ROAD  
OFALLON, ILLINOIS 62268

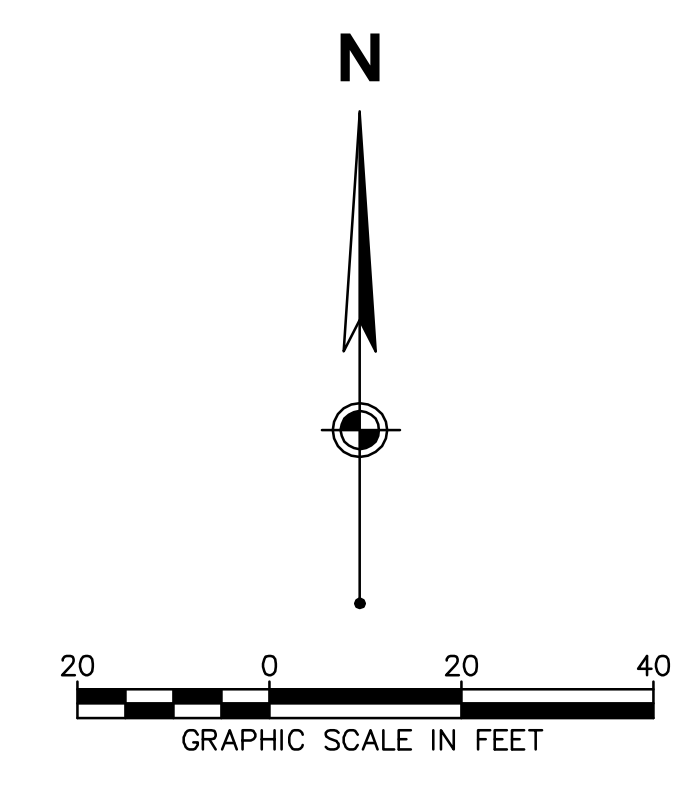
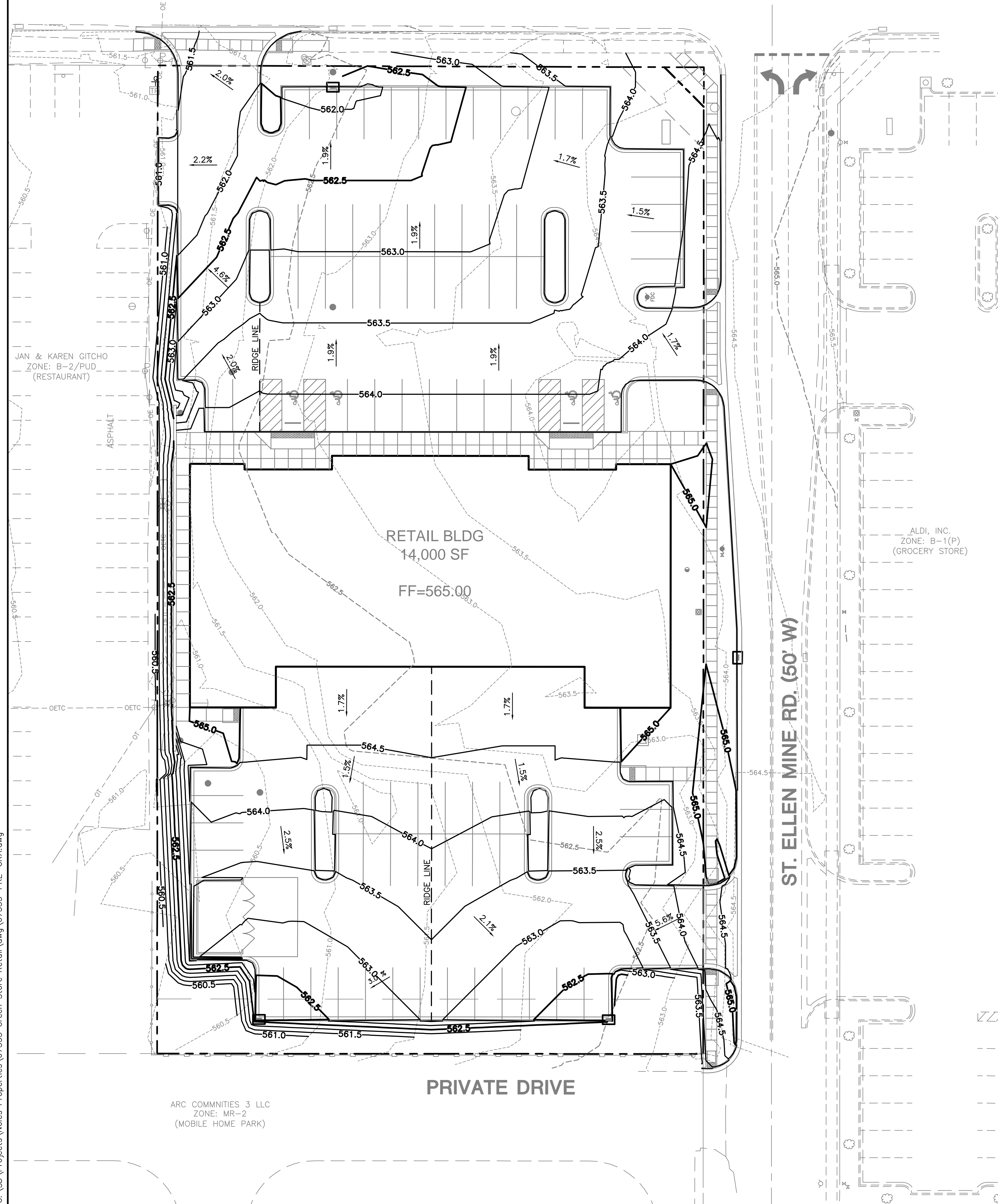
**PRELIMINARY SITE PLAN**

SHEET NO.

**C200**

HIGHWAY 50 (WIDTH VARIES)

**PROPOSED GRADING PLAN**  
PART OF LOT 6 OF ST. ELLEN'S TRACTS  
SUBDIVISION



No.	DATE	REVISION
11/27/07	REVISED PER CITY COMMENTS	
11/21/07	REVISED PER CITY COMMENTS	
10/10/07	REVISED PER CITY COMMENTS	

**PROJECT No:** 67353  
**DATE:** SEP 2007  
**DES. DR. CKD.:** JFS DMB JFS

**WOOLPERT, INC.**  
343 Fountains Parkway, Suite 100  
Fairview Heights, Illinois  
62208-2044  
618.632.7004  
618.632.0100

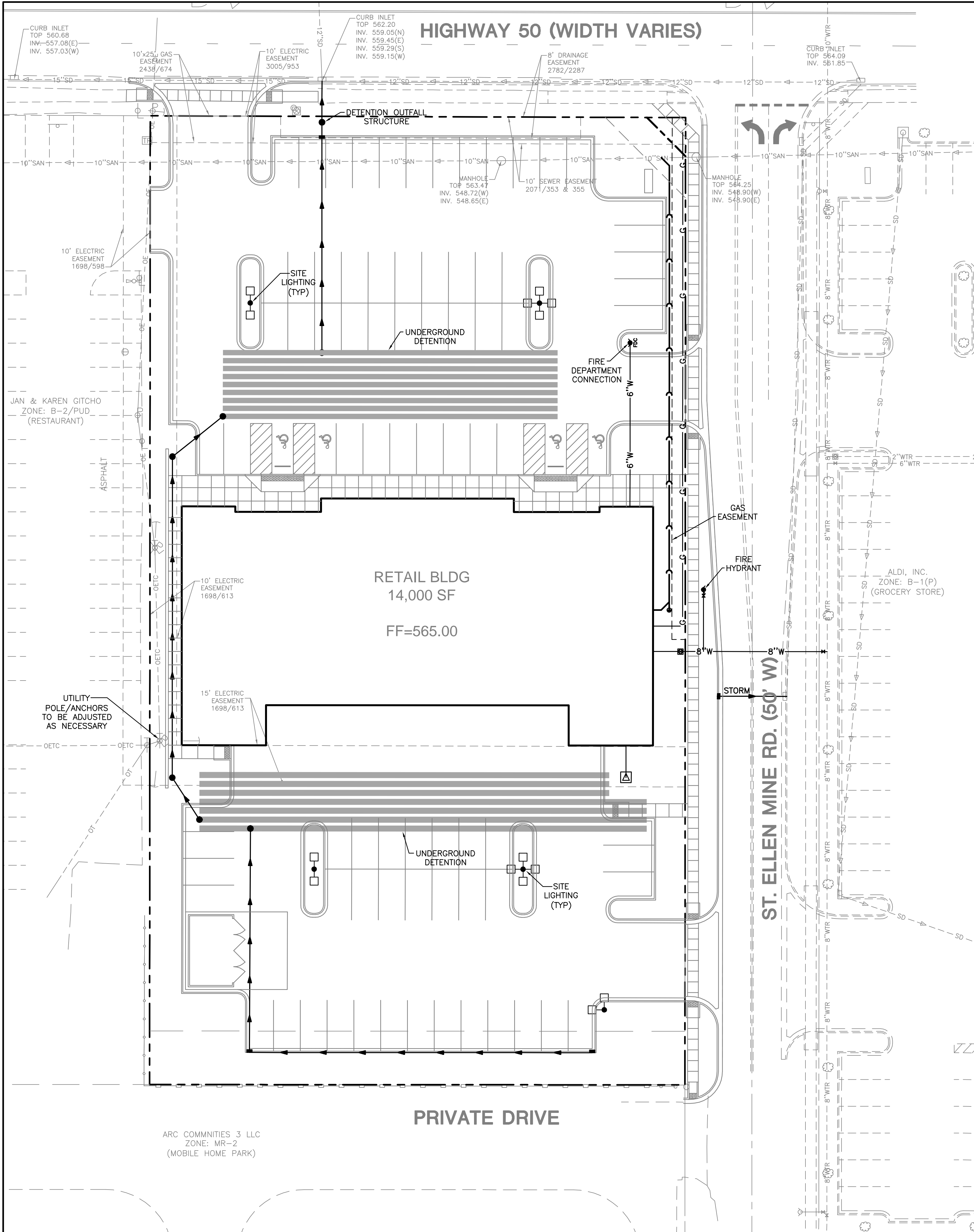
**NOLES PROPERTIES**  
U.S. HIGHWAY 50 & ST. ELLEN MINE ROAD  
OF FALLON, ILLINOIS 62269

**PRELIMINARY GRADING PLAN**

SHEET NO.  
**C300**

G:\SD\Projects\Noles Properties\67353 Green Store Retail\dwg\67353-PRG-CRA.dwg

G:\SD\Projects\Notes Properties\67353-Green-Store-Retail\dwg\67353-PRE-UTL.dwg



**PROPOSED UTILITY PLAN**  
PART OF LOT 6 OF ST. ELLEN'S TRACTS  
SUBDIVISION

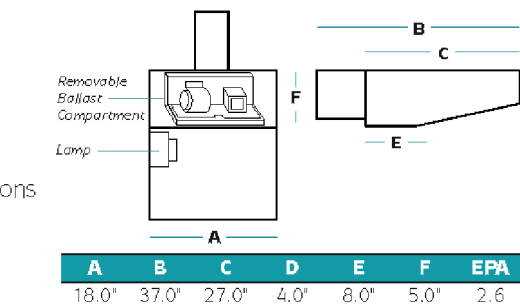
**THE WEDGE SERIES**



The unique styling of the Wedge Series evolves around a universal optical assembly that accommodates both long range and wide beam distributions. Its bold, modern design will meet the challenges of today's lighting needs.

**Fixture Specifications**

- One-piece formed aluminum housing
- Access to lamp and ballast compartments through hinged door assembly
- One-piece tempered glass lens oriented at 17° above horizontal for maximum performance with minimal back light
- Optical system fabricated of polished aluminum, provides for optimum efficiency for long and wide light distribution
- Luminaire finished in weatherproof powder-coat paint
- Available with photocell and polycarbonate shield
- High power factor ballast with -20°F starting
- Consult factory for glare shield options
- Lamp and arm included



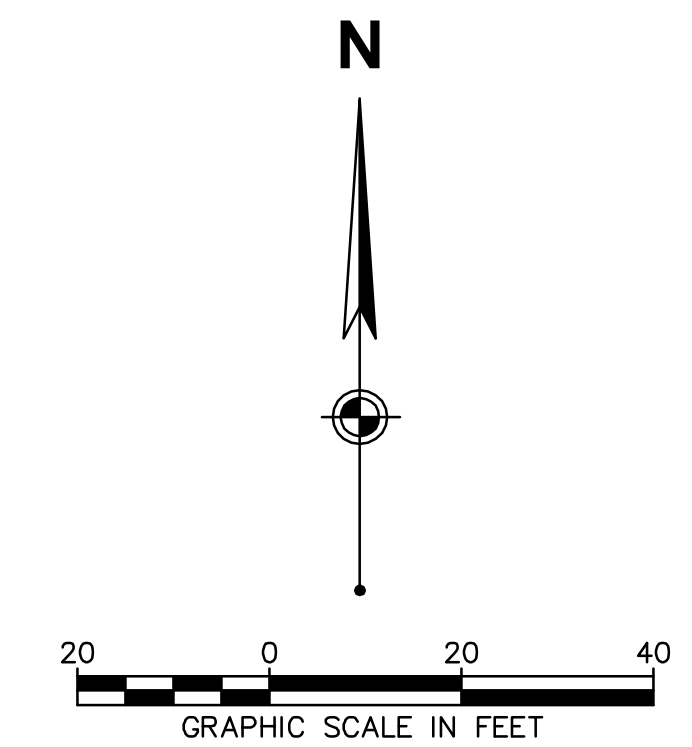
**ORDERING INFORMATION**

SAMPLE CATALOG NUMBER  
**WL XXXXXX XX X XX**

Series	Wattage/Source	Finish	Distribution	Voltage
<b>WL</b> Wedge Series		<b>DB</b> Dark Bronze		<b>MT</b> Multi-Tap (120, 208, 240, 277V)
<b>WATTAGE/SOURCE</b>		<b>BK</b> Black		<b>48</b> 480V
<b>175MH</b> 175 watt metal halide		<b>WH</b> White		
<b>250MH</b> 250 watt metal halide		<b>AD</b> Almond		
<b>400MH</b> 400 watt metal halide		<b>MG</b> Musket Gray		
<b>150HPS</b> 150 watt high pressure sodium		<b>DISTRIBUTION</b>		
<b>250HPS</b> 250 watt high pressure sodium		<b>1</b> Forward Throw		
<b>400HPS</b> 400 watt high pressure sodium		<b>2</b> Type II		

1 Consult factory for other wattages & Pole Start availability  
2 Consult factory for other finishes

**SECURITY LIGHTING SYSTEMS**  
A HUBBELL LIGHTING, INC. COMPANY  
Performance Designed Lighting Products  
1085 Johnson Drive • Buffalo Grove, IL 60089 • TOLL-FREE: 800-544-4848 • PHONE: 847-279-0627 • FAX: 847-279-0642  
www.securitylighting.com



No.	DATE	REVISION
11/21/07		REVISED PER CITY COMMENTS
10/30/07		REVISED PER CITY COMMENTS
10/10/07		REVISED PER CITY COMMENTS

PROJECT No: 67353  
DATE SEP 2007  
DES. JFS  
DR. DMB  
CKD. JFS

WOOLPERT, INC.  
343 Fountains Parkway, Suite 100  
Fairview Heights, Illinois  
62208-2044  
618.632.7004  
618.632.0100

**NOLES PROPERTIES**  
U.S. HIGHWAY 50 & ST. ELLEN MINE ROAD  
OFALLON, ILLINOIS 62269

**PRELIMINARY UTILITY PLAN**

SHEET NO.  
**C400**