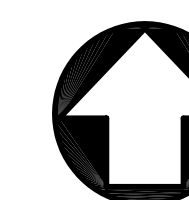
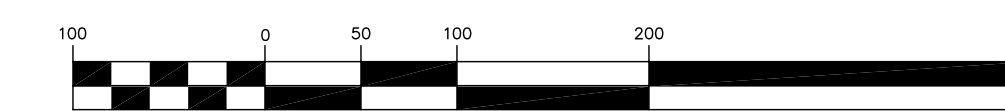


ANNEXATION PLAT

A TRACT OF LAND BEING PART OF THE SOUTHEAST QUARTER OF SECTION 25  
AND THE NORTHEAST QUARTER OF SECTION 36 IN TOWNSHIP 2 NORTH,  
RANGE 8 WEST OF THE THIRD PRINCIPAL MERIDIAN  
ST. CLAIR COUNTY, ILLINOIS



GRAPHIC SCALE



( IN FEET )  
1 inch = 100 ft.

PREPARED BY  
**Berutti**  
BERUTTI & ASSOCIATES, INC.  
ENGINEERS / PLANNERS / SURVEYORS  
204 WEST MAIN STREET  
BELLEVILLE, ILLINOIS 62220  
(618) 298-0600  
E-MAIL: [berutti@beruttiassociatesinc.com](mailto:berutti@beruttiassociatesinc.com)  
PROFESSIONAL REGISTRATIONS LICENSE NO.  
ILLINOIS PROFESSIONAL DESIGN FIRST 184-00364  
MISSOURI PROF. ENGINEERING CORP. NC 0640  
MISSOURI LAND SURVEYING CORP. NC 00003

ENGINEER'S / SURVEYOR'S AUTHENTICATION:  
THE RESPONSIBILITY FOR THE PROFESSIONAL LIABILITY ON THIS PROJECT IS HEREBY LIMITED TO THIS SET OF PLANS, AUTHENTICATED BY THE SEAL, ENGINEER'S SIGNATURE OR SURVEYOR'S SIGNATURE AND DATE HEREON ATTACHED. RESPONSIBILITY IS DISCLAIMED FOR ALL OTHER PLANS INVOLVED IN THIS PROJECT, AND SPECIALLY EXCLUDES REVISIONS AFTER THIS DATE UNLESS REAUTHENTICATED.  
BERUTTI AND ASSOCIATES, INC.

SEAL

RP SOUTH, LLC  
1331 PARK PLAZA DRIVE  
SUITE 4  
O'FALLON, ILLINOIS 62269  
(618)628-0699

PROJECT  
ANNEXATION PLAT  
REGENCY PARK  
O'FALLON, ILLINOIS

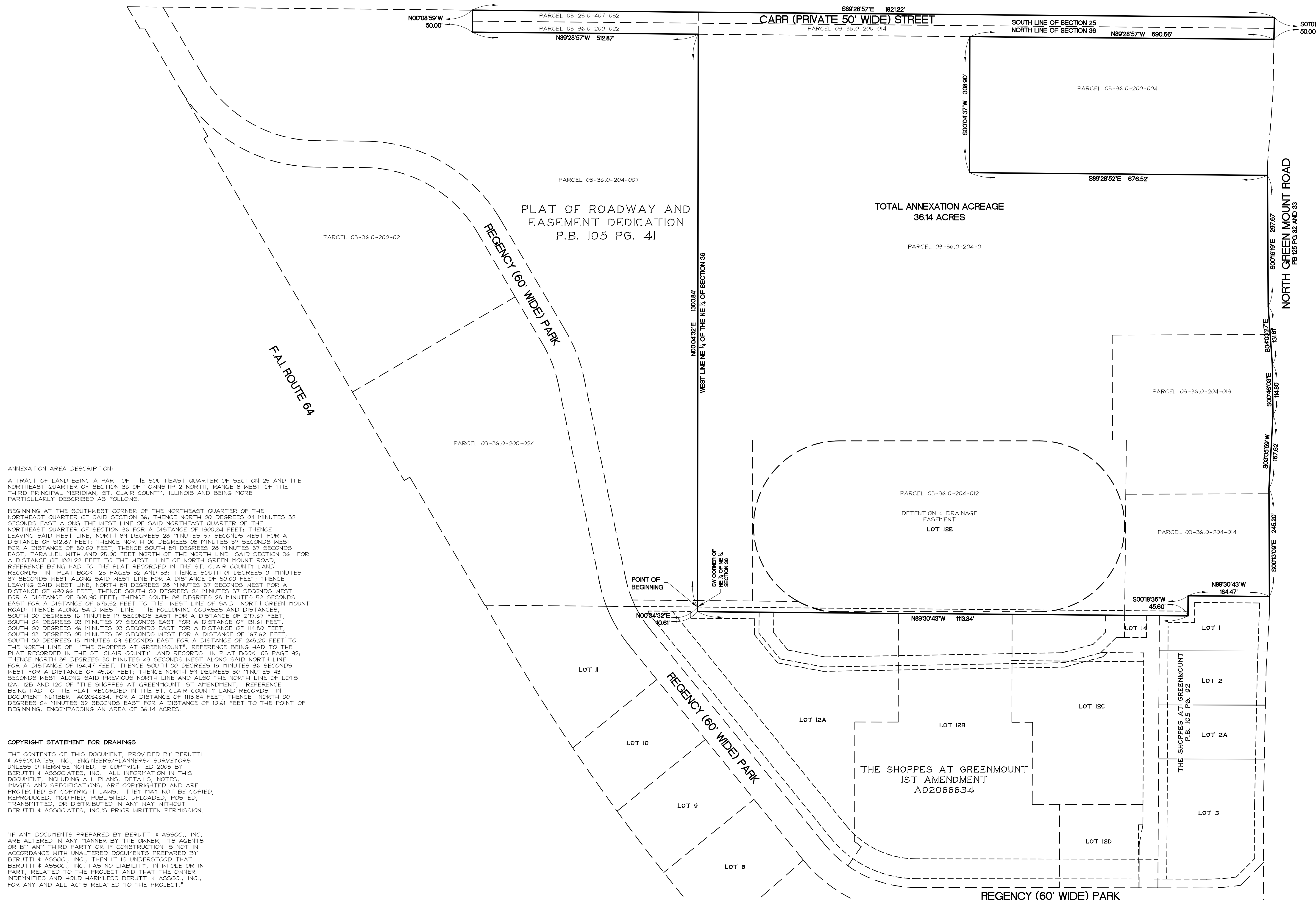
REVISION
10-02-08 REVISED LEGAL
10-20-08 REVISED LEGAL PER CITY COMMENTS

TITLE  
ANNEXATION PLAT

PROJECT NO. 08-70 SHEET 1

DATE 09-25-08 OF 1

DRAWING NO.: 0870.DWG



ANNEXATION AREA DESCRIPTION:  
A TRACT OF LAND BEING A PART OF THE SOUTHEAST QUARTER OF SECTION 25 AND THE NORTHEAST QUARTER OF SECTION 36 OF TOWNSHIP 2 NORTH, RANGE 8 WEST OF THE THIRD PRINCIPAL MERIDIAN, ST. CLAIR COUNTY, ILLINOIS AND BEING MORE PARTICULARLY DESCRIBED AS FOLLOWS:

BEGINNING AT THE SOUTHWEST CORNER OF THE NORTHEAST QUARTER OF SAID SECTION 36; THENCE NORTH 00 DEGREES 04 MINUTES 32 SECONDS EAST ALONG THE WEST LINE OF SAID NORTHEAST QUARTER OF THE NORTHEAST QUARTER OF SECTION 36 FOR A DISTANCE OF 1300.84 FEET; THENCE LEAVING SAID WEST LINE, NORTH 89 DEGREES 28 MINUTES 57 SECONDS WEST FOR A DISTANCE OF 512.87 FEET; THENCE NORTH 00 DEGREES 00 MINUTES 59 SECONDS WEST FOR A DISTANCE OF 50.00 FEET; THENCE SOUTH 89 DEGREES 28 MINUTES 57 SECONDS EAST, PARALLEL WITH AND 25.00 FEET NORTH OF THE NORTH LINE SAID SECTION 36 FOR A DISTANCE OF 1821.22 FEET TO THE WEST LINE OF NORTH GREEN MOUNT ROAD, REFERENCE BEING HAD TO THE PLAT RECORDED IN THE ST. CLAIR COUNTY LAND RECORDS IN PLAT BOOK 125 PAGES 32 AND 33; THENCE SOUTH 01 DEGREES 01 MINUTES 37 SECONDS WEST ALONG SAID WEST LINE FOR A DISTANCE OF 50.00 FEET; THENCE LEAVING SAID WEST LINE, NORTH 89 DEGREES 28 MINUTES 57 SECONDS WEST FOR A DISTANCE OF 690.66 FEET; THENCE SOUTH 00 DEGREES 04 MINUTES 37 SECONDS WEST FOR A DISTANCE OF 308.90 FEET; THENCE SOUTH 89 DEGREES 28 MINUTES 52 SECONDS EAST FOR A DISTANCE OF 676.52 FEET TO THE WEST LINE OF SAID NORTH GREEN MOUNT ROAD; THENCE ALONG SAID WEST LINE, THE FOLLOWING COURSES AND DISTANCES, SOUTH 00 DEGREES 16 MINUTES 19 SECONDS EAST FOR A DISTANCE OF 297.67 FEET, SOUTH 04 DEGREES 03 MINUTES 27 SECONDS EAST FOR A DISTANCE OF 131.61 FEET, SOUTH 00 DEGREES 46 MINUTES 03 SECONDS EAST FOR A DISTANCE OF 114.80 FEET, SOUTH 03 DEGREES 05 MINUTES 59 SECONDS WEST FOR A DISTANCE OF 167.62 FEET, SOUTH 00 DEGREES 13 MINUTES 09 SECONDS EAST FOR A DISTANCE OF 245.20 FEET TO THE NORTH LINE OF "THE SHOPPES AT GREENMOUNT", REFERENCE BEING HAD TO THE PLAT RECORDED IN THE ST. CLAIR COUNTY LAND RECORDS IN PLAT BOOK 105 PAGE 42; THENCE NORTH 89 DEGREES 30 MINUTES 43 SECONDS WEST ALONG SAID NORTH LINE FOR A DISTANCE OF 184.47 FEET; THENCE SOUTH 00 DEGREES 18 MINUTES 36 SECONDS WEST FOR A DISTANCE OF 45.60 FEET; THENCE NORTH 89 DEGREES 30 MINUTES 43 SECONDS WEST ALONG SAID PREVIOUS NORTH LINE AND ALSO THE NORTH LINE OF LOTS 12A, 12B AND 12C OF "THE SHOPPES AT GREENMOUNT 1ST AMENDMENT", REFERENCE BEING HAD TO THE PLAT RECORDED IN THE ST. CLAIR COUNTY LAND RECORDS IN DOCUMENT NUMBER A02066634, FOR A DISTANCE OF 1113.84 FEET; THENCE NORTH 00 DEGREES 04 MINUTES 32 SECONDS EAST FOR A DISTANCE OF 10.61 FEET TO THE POINT OF BEGINNING, ENCOMPASSING AN AREA OF 36.14 ACRES.

COPYRIGHT STATEMENT FOR DRAWINGS  
THE CONTENTS OF THIS DOCUMENT, PROVIDED BY BERUTTI & ASSOCIATES, INC., ENGINEERS/PLANNERS/ SURVEYORS UNLESS OTHERWISE NOTED, IS COPYRIGHTED 2008 BY BERUTTI & ASSOCIATES, INC. ALL INFORMATION IN THIS DOCUMENT, INCLUDING ALL PLANS, DETAILS, NOTES, IMAGES AND SPECIFICATIONS, ARE COPYRIGHTED AND ARE PROTECTED BY COPYRIGHT LAWS. THEY MAY NOT BE COPIED, REPRODUCED, MODIFIED, PUBLISHED, UPLOADED, POSTED, TRANSMITTED, OR DISTRIBUTED IN ANY WAY WITHOUT BERUTTI & ASSOCIATES, INC.'S PRIOR WRITTEN PERMISSION.

\*IF ANY DOCUMENTS PREPARED BY BERUTTI & ASSOC., INC. ARE ALTERED IN ANY MANNER BY THE OWNER, ITS AGENTS OR BY ANY THIRD PARTY OR IF CONSTRUCTION IS NOT IN ACCORDANCE WITH UNALTERED DOCUMENTS PREPARED BY BERUTTI & ASSOC., INC., THEN IT IS UNDERSTOOD THAT BERUTTI & ASSOC., INC. HAS NO LIABILITY, IN WHOLE OR IN PART, RELATED TO THE PROJECT AND THAT THE OWNER INDEMNIFIES AND HOLD HARMLESS BERUTTI & ASSOC., INC., FOR ANY AND ALL ACTS RELATED TO THE PROJECT.\*