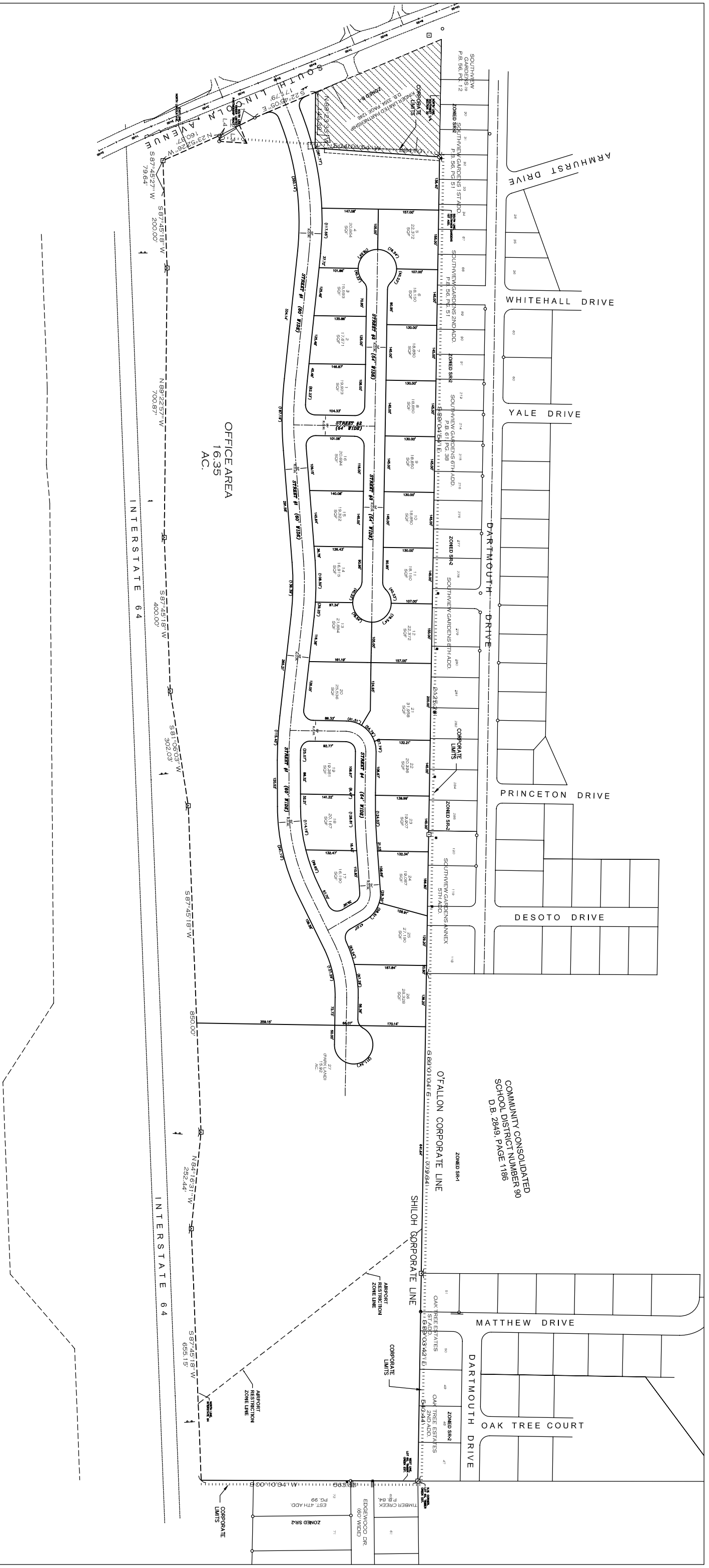


(ASSUMED)  
SCALE: 1" = 250'



COMMUNITY CONSOLIDATED  
SCHOOL DISTRICT NUMBER 90  
D.B. 2849, PAGE 1188

OFFICE AREA  
16.35  
AC.

INTERSTATE 64

INTERSTATE 64

INTERSTATE 64

INTERSTATE 64