

City of O'Fallon

Department of Public Works

FY 12 Budgets

- **Streets / Stormwater (General Fund)**
- **Water**
- **Wastewater Treatment Plant (WWTP)**
- **Sewer Lines**
- **Prop S (Roads/Sidewalks/Stormwater)**
- **Motor Fuel Tax (MFT)**
- **Facilities**

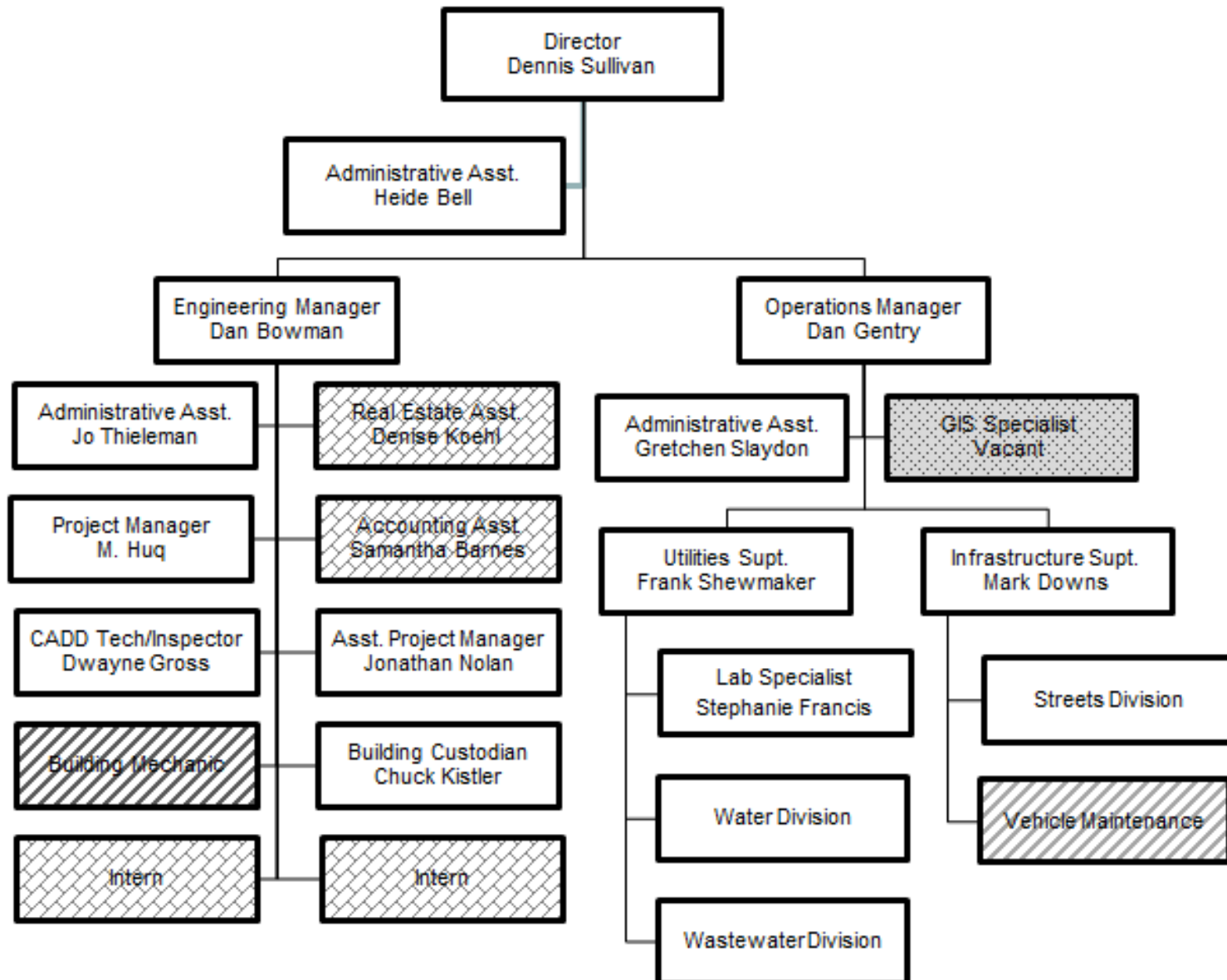
Quick Look

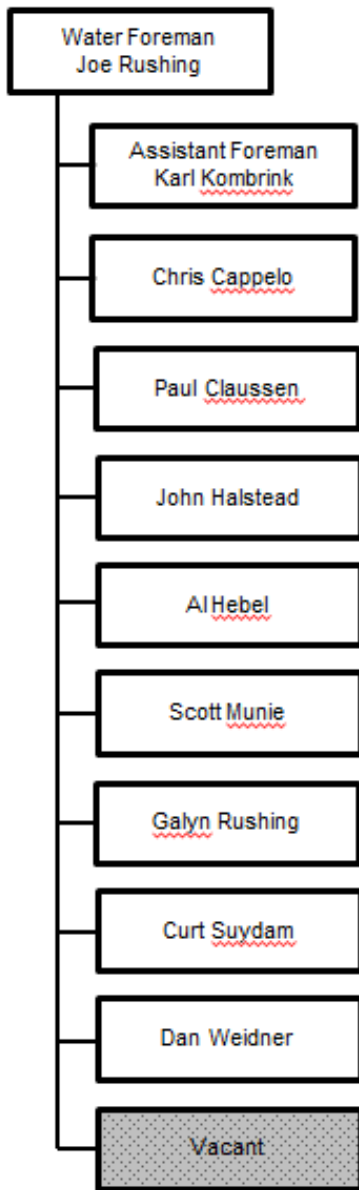
	Actual Expenditures		Approved	Predicted	Proposed	% change from Approved 2011
	2009	2010	2011	2011	2012	
Streets	\$ 2,418,484	\$ 2,068,524	\$ 2,586,800	\$ 2,591,700	\$ 2,706,895	4.64%
Water	\$ 7,907,317	\$ 7,480,168	\$ 8,960,620	\$ 9,023,000	\$ 9,469,145	5.68%
WWTP	\$ 2,295,228	\$ 2,085,498	\$ 2,686,660	\$ 2,616,500	\$ 2,817,375	4.87%
Sewers	\$ 1,307,610	\$ 1,220,228	\$ 2,208,460	\$ 2,102,500	\$ 2,412,745	9.25%
Prop S	\$ 2,558,100	\$ 1,062,914	\$ 1,601,000	\$ 868,200	\$ 2,156,275	34.68%
MFT	\$ 512,317	\$ 558,776	\$ 2,044,890	\$ 719,000	\$ 2,235,000	9.30%
Facilities	\$ 156,019	\$ 180,555	\$ 213,600	\$ 195,200	\$ 273,300	27.95%

O'Fallon Infrastructure Statistics – As of January 2010			
Item	Quantity	Unit	Comment
O'Fallon Municipal Area	14.07	Sq. Mi.	
Sidewalks	133.1	Miles	
Streets	187.73	Miles	w/State & County roadways
Snow Routes	46.22	Miles	
Street Lights	4,607	Each	
Street Signs	3,654	Each	Est. Based on Mapping to Date
Sewer Mains	118.9	Miles	
Sewer Manholes	2,320	Each	
Water Mains	278.8	Miles	
Fire Hydrants	2,159	Each	
Water Meters	16,302	Each	
Water Valves	3,670	Each	3,656 system valves, 14 control
Storm Catch Basins	4,210	Each	Est. Based on Mapping to Date

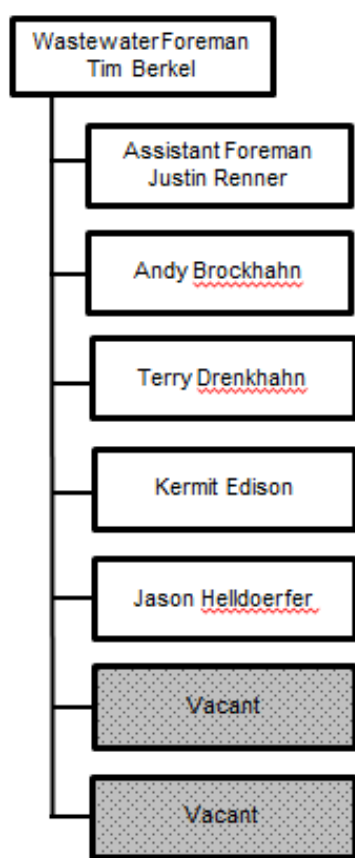
	Existing	Full Time	Comment
Director	2	2	
Operations	4	5	One vacancy - GIS Specialist; Plus Contract GIS Technician
Water	10	11	One vacancy
WWTP	2	4	Two vacancies
Sewer Lines	5	5	
Streets	9	12	Three vacancies
Engineering	6	6	Plus Part-Time Real Estate & Accounting Assistants
Total	38	45	

Public Works

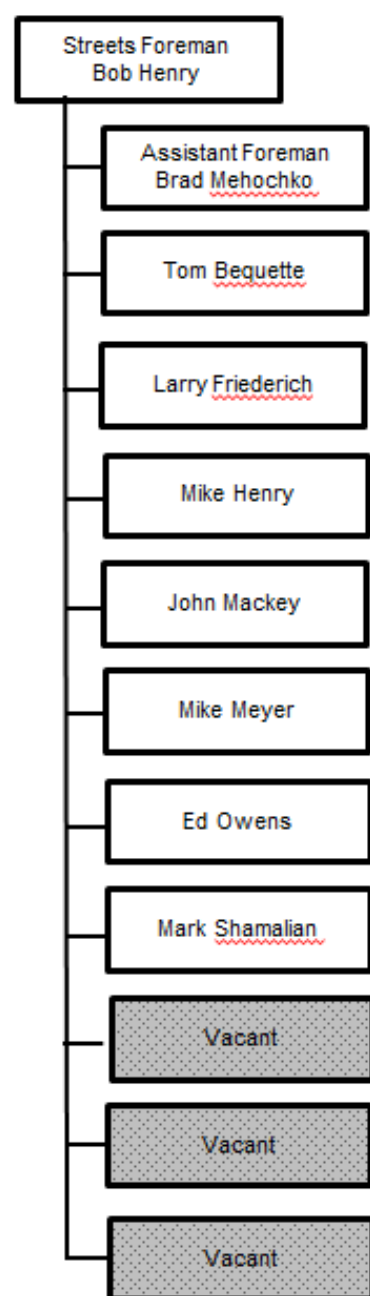




(11)



(8)



(12)

UNIT NO.	YEAR	VEHICLE / EQUIPMENT	MILEAGE / HOURS	GROUP - DIVISION	NOTES	PTS.	FY REPL.	PURCHASE PRICE
1	2006	Ford F-250 Utility Pick-up	43,111	Water	Foreman	8	14	\$ 18,755
2	2007	Chevy Silverado Pick Up	63,866	Water	Service Orders	10	13	\$ 11,451
3	2005	Chevy Silverado Pick Up	100,518	Water	Meter Reader	15	11	\$ 13,153
4	2003	Ford F350 Dumpbed Truck	60,520	Street	Spreader/Snow Plow	13	13	\$ 27,517
5	2010	John Deere JD410J Backhoe	80hrs.	Water	Delivered 6/24/10	3yrs.	13	\$ 57,000
6	2005	International 4200 LP Utility Truck	32,423	Water	Taps & Breaks	8	15	\$ 52,172
7	2005	Chevy Silverado Pick Up	33,474	Public Works	Shared by Depts.	8	14	\$ 13,295
8	2010	Ford F150- 4X2 Pick Up	1,808	Water	W/computer station	new	18	\$ 13,295
9	2002	Dodge Ram 1500 ST Pick up	56,194	Public Works	Superintendent	13	12	\$ 14,370
10	2005	Chevy Silverado Pick Up	96,237	Street	Foreman	14	11	\$ 13,153
11	2010	Ford F 350 Utility Pickup	15,654	Water	Sewer/Water Locates	1	16	\$ 20,660
12	2011	Ford F350-4X4 Pick Up	1,527	Street	Snow plow	new	20	\$ 19,890
13	2001	International 4900 Dumpbed Trk.	19,148	Street	Spreader/Snow Plow	12	16	\$ 63,000
14	2007	John Deere JD310 SJ Backhoe	2103hrs	Street	w/ditching bucket	5yrs.	12	\$ 70,400
15	2006	Ford F-250 Utility Pick-up	55,109	Sewer Lines	Foreman	9	14	\$ 18,769
16	2009	Ford F-550 Utility Service Bed	1,824	Sewer Lines	Sewer Service & maint	new	20	\$ 140,535
17	2005	Chevy Silverado Pick Up	63,123	Sewer Lines	Asst. Foreman	11	12	\$ 13,153
18	2008	Ford F450 Dumpbed Truck	20,917	Street	Snow plow	4	16	\$ 36,715
19	2007	Intern'l 7400 Dumpbed Truck	3,415	Street	Spreader/Snow Plow	3	17	\$ 81,507
20	2001	Dodge Ram 2500 Pickup	44,538	Sewer Plant	Snow plow	13	12	\$ 16,674
21	2007	Ford F-250 Utility Pick-up	24,193	Sewer Plant	w/lift gate	5	17	\$ 18,307
22	2005	John Deere JD310 SG 4 WD backh	2044hrs	Swr. Plnt/Lns.	Delivered 7/25/05	5yrs.	08/11/14	\$ 70,950
23	1998	Intern'l 4900 Series Dumpbed Trk.	43,727	Street	Spreader/Snow Plow	16	12	\$ 55,533
24	1999	Intern'l 4900 Series Dumpbed Trk.	27,661	Street	Spreader/Snow Plow	14	13	\$ 66,059
25	2003	Chevrolet Cargovan	66,897	Street	Signs/Summer Hires	13	13	\$ 15,097
26	1999	Intern'l 4900 Series Dumpbed Trk.	23,589	Street	Spreader/Snow Plow	13	12	\$ 66,059
27	2001	Intern'l 4900 Series Dumpbed Trk.	22,961	Street	Spreader/Snow Plow	11	14	\$ 66,059
28	2001	Utility Bed Bucket Truck	64,949	Street	Delivered 2/13/01	16	09	\$ 47,977
29	2011	Intern'l 7500 SFA 6X4 Vac-Con Trk.		Sewer/Streets	Delivered 9/20/2010	new	16	\$ 213,509
40	2005	Intern'l 7400 Dumpbed Truck	9,206	Water	Spreader/Snow Plow	5	15	\$ 77,410
41	2005	Intern'l 7400 Dumpbed Truck	3,206	Street	Spreader/Snow Plow	5	15	\$ 77,410
42	1994	Chevrolet Step Van	34,672	Sewer	Video Inspect Vehicle	used	?	\$ 57,498
43	2007	Ford F350 Utility Pickup	41,143	Water	Hydrant Maint.	10	14	\$ 24,345
AIR	2004	Johnston 770 Regen-Air Sweeper	16,303	Street	Freightliner cab/chassis	6yrs.	14	\$ 141,724
MG	1994	Motor Grader	1151hrs.	Street	Replace @ 14 yrs.	16yrs.	08	\$ 158,351

TC	2007	John Deere Tool Carrier w/Fr. Ldr.	776hrs.	Street	Delivered 9/17/07	3yrs.	15	\$ 104,322
SS	2007	Johnston VT650 Vacuum Sweeper	10394	Street	Freightliner cab/chassis	3yrs.	17	\$ 161,900
DP	2003	DuraPatcher	498	Street	model#125DJT	7yrs.	18	\$ 49,500
PT	2001	Interstate Paver Trailer		Street	Flatbed tandem axle	8yrs.	21	\$ 6,745
PAVE	1989	Asphalt Spreader/Paver	BROKE	Street	10' Asphalt paver	20yrs.	06	\$ 17,900
5210	2001	J.D. 5210 Tractor & 521 Front Ldr.	1131hrs.	Street	6' JD brush hog mower	8yrs.	12	\$ 12,235
TS	2001	New Holland TS-90 Tractor	2286hrs.	Street	w/boom mower	8yrs.	12	\$ 22,490
BM	1994	Tiger Boom Mower		Street	Mount on N.H. TS-90 Tr.	15yrs.	14	\$ 13,767
ROL	2003	Ammann Vibritary Asphalt Roller	162hrs.	Street	Model AV26	6yrs.	13	\$ 24,900
AC	2000	Sullivan Portable Air Compressor	133hrs	Street	W/Rhino Post Driver	9yrs.	21	\$ 12,328
ZERO 3	2010	Scag Zero turn 72" mower		Street	R.O.W. Mower	new	20	\$ 14,097
WC	2003	Vermeer Wood Chipper BC 1400	376hrs.	Street	BC 1400	7yrs.	18	\$ 9,488
JD 240	2002	JD Skid Steer loader w/ attachments	146 hrs	Srt./Swr./Wtr.	Cyclone brkr 12/03 \$8k	7yrs.	12	\$ 19,920
	2002	Skid Steer trailer		Str/Swr/Wtr.	also used for roller	7yrs.	22	\$ 3,790
ABS	1993	Portable Arrow Board Sign	166 hrs	Strt./Swr./Wtr.	traffic control	16yrs.	08	\$ 3,494
D9X13 II	2010	Vermeer Directional Boring Machine	4hrs	Water	With 16' trailer	new	18	\$ 57,777
	2003	Belshe trailer for boring machine		Water	w/tanks and tool boxes	6yrs.	18	\$ 5,462
ZERO 1	2004	Scag Zero turn 72" mower	557hrs	Street	Rec'd 9-29-04	5yrs.	14	\$ 13,477
PACE	2003	Pace Enclosed Trailer		Sewer Lines	Model RT8520TA2	6yrs.	22	\$ 5,994
GEN	1999	Generator-30 KW (2048232)	224hrs	Sewer Lines	Generator	11yrs.	20	\$ 15,586
YALE	2001	Fork Lift (6000lb.) LP fueled	15450hrs	Water	delivered 10/17/07	8yrs.	13	\$ 10,200
PMP 1	1995	Crown 6" Portable Pump	369hrs.	Sewer Lines	purchased from Dinzler	14yrs.	15	\$ 14,900
PMP 2	1996	Gorman-Rupp 6" Port. Pump Dsl.	1200hrs.	Sewer Lines	purchased from Allied	13yrs.	16	\$ 13,910
PMP 3	2001	Gorman-Rupp 6" Port. Pump Dsl.	134hrs.	Sewer Lines	purchased from Fabick	8yrs.	22	\$ 7,500
SS125	2006	Crafco SS125 Melter Crack Sealer	553hrs.	Street	purchased 11/21/06	4yrs.	20	\$ 31,885
PMP 6	1994	Crown 6" Portable Pump	7520hrs	Sewer Plant	purchased from Dinzler	15yrs.	14	\$ 12,750
	1996	Aquatic Harvester Trailer/Conveyor		Sewer Plant	Rec'd 6/12/97	13yrs.	16	\$ 13,000
APH	1996	Aquatic Plant Harvester	120hrs	Sewer Plant	Rec'd 6/12/97	13yrs.	16	\$ 10,200
5410	1998	John Deere 5410 Tractor & Mower	308hrs	Sewer Plant	w/front loader attachment	11yrs.	18	\$ 21,817
72LC	2007	Harper DewEze All-Terrain Mower	246hrs	Sewer Plant	Rec'd 8/13/07	2yrs.	14	\$ 37,450
SA14	2000	Sea Ark 14' Jon Boat w/trailor		Sewer Plant	with trailer	9yrs.	21	\$ 1,545
4120	2005	John Deere tractor w/400X Loader	475hrs	Sewer Plant	6'cutter&backhoeatth	4yrs.	20	\$ 28,513
ZERO 2	2004	Scag Zero turn 72" mower	626hrs	Sewer Plant	Model 86094 STT-31	5yrs.	14	\$ 13,477

53	2003	Ford Explorer XLS	27,665	PW Mgr	Delivered 9/5/03	9	16	\$ 23,014
54	2005	Chevy Silverado Pick Up	39,971	Engineering	Asst. Engr.	8	15	\$ 13,153
55	2008	Dodge Durango SUV 4 door	12,931	Engineering	Asst. Engr.	3	18	\$ 21,250
56	2005	Chevy Silverado Pick Up	25,278	Engineering	Asst. Engr.	7	15	\$ 13,153
57	2010	Toyota RAV 4 SUV	2,437	Engineering	Engr. Manager	new	20	\$ 20,876
58	2007	Ford F-250 Utility Pick-up	45,993	Public Works	w/lift gate	7	16	\$ 18,307
59	2007	Chevy Silverado Pick Up	23,000	Water/Waste	Utilities Supervisor	5	17	\$ 11,451
60		General Lee	+	Engineering	surplus from OPD	used		
62	2002	Chevy Blazer LS 4 door	39,334	Sewer Plant	sample technican	12	12	\$ 21,366

Ford Transit – Water Service Vehicle



Portable Message Board

Sunray 190 .pdf

Chassis Size: 130" long by 74" wide.

Sign Size: 48" high by 96" wide

Sign type: full matrix, full graphics

Window: one piece front opening anti-glare

Drawbar wheeled swing jack: Standard

Legibility: 1,200 ft.

Lift: winch

Optional radar/strobe kit



New Wing Rotary Cutter for ROW Mowing

Bush Hog® Flex Wing Rotary Cutters

2710L

The 2710L is designed for heavier grass and brush on uneven terrain and is available with the weight box configured for either left wing or right wing operation. With a 10-foot cutting width and 3 1/2-inch diameter cutting capacity, the 2710L is rated for use on tractors with a minimum of 60 PTO horsepower.

Performance Features

- Ideal For Roadside Mowing
- EZ Lube Driveline & EZ Clean Double Deck
- Cushioned Axle Arms At Wheels
- Spring Steel Bushings At Axle Pivot Points
- 10 1/2 ft Cutting Weight
- 8 ft Transport Width At Hinges
- Self Leveling Perma-Level® Hitch
- 2 to 14 Inch Cutting Height
- 89 Degrees Up To 22 Degrees Down Wing Flex
- Hydraulic Height Adjustment & Hydraulic Wing Adjustment
- Transport Safety Lock
- Optional Constant Velocity Driveline For Turns To 80 Degrees

[Return to Rotary Cutters](#)





O'Fallon
ILLINOIS

~~FULL COLOR
LED DISPLAY
48 X 112 MATRIX~~

LIBRARY
BOOK SALE
TODAY

11.21.2

All Signs – Monochrome (Amber)

City Hall Proposed Size
3'10" x 7'10" (20 mm Resolution)

Methodist Church Sign
2'6" x 9' (20 mm Resolution)

Fire Station #2
3'3" x 10'6" (34 mm Resolution)

Proposed City Hall Sign could display 5 to 6 rows of text, visible at about 150-feet.

Mt Healthy High School
Cincinnati, Ohio, United States

Product: Message Displays
Series: AF-3500
LED Color: Full-Color
Lines & Columns: 48 x 144
Line Spacing: 20 mm
Approx. Dimensions: 3'10" x 9'11" x 8" (1.17 m x 3.02 m x .2 m)

6"
Letters



10"
Letters



- **Streets, Water, and Wastewater Bigger Ticket Expense Items**
- **Water and Wastewater Revenue Discussion To Follow**

Line Item Details in Handouts !

Utility System Maintenance		Streets	Water	WWTP	Sewers
	Maintenance Streets	\$ 250,000			
	Maintenance Stormwater	\$ 45,000			
	Maintenance Utility Systems	\$ 60,000			
	PW Compound 1 MG Ground Storage Tank Repair		\$ 200,000		
	St Clair Square Elevated Storage Tank Repair		\$ 200,000		
	Perrin (Barco to Enos) Water Main Replacement; Duryl to Traubel Extension		\$ 160,000		
	Motor/Pump Failure Replacement			\$ 50,000	
	Rebuild Electric Panel, Filter Building			\$ 42,000	
	Auger Monster Repair			\$ 40,000	
	2nd/3rd Street Alley Sewer Main Replacement				\$ 320,000
	Venita Drive Sewer Main Relocation				\$ 54,000
	Contract Jetting Services or Additional Employee for Wed thru Sun Shift				\$ 150,000
	Hilgard & Augusta Backyard Sewer Main Replacement				\$ 240,000

Training		Streets	Water	WWTP	Sewers
	ESRI User Conference - Dan Gentry (Total Cost \$2,500)	\$ 500	\$ 1,500		\$ 500
	Operator/Employee Training	\$ 1,500	\$ 5,000	\$ 4,000	\$ 5,500

Computer Services		Streets	Water	WWTP	Sewers
	St Clair County Parcel Data	\$ 8,000	\$ 15,000	\$ 2,950	\$ 8,000
	New World Custom Report Programming		\$ 3,000		\$ 15,000
	Valve Star Upgrade to Spin Doctor Software		\$ 8,200		
	IT - General Support	\$ 35,670	\$ 119,269	\$ 23,595	\$ 23,595
	IT - New World Finance/Payroll Modules	\$ 3,445	\$ 21,305	\$ 4,780	\$ 4,780
	Wonderware License		\$ 10,000		
	Wisper Radio Maintenance		\$ 10,000		
	ESRI License (GIS)	\$ 8,000	\$ 16,000	\$ 2,000	\$ 9,000
	Cityworks License	\$ 6,000	\$ 15,000	\$ 2,500	\$ 15,500
	Vidac for WWTP SCADA Programming			\$ 10,000	
	SCADA Software Licenses			\$ 20,000	
	Security Server Replacement - Add Blade to Planned Server Purchase				\$ 8,000
	GIS Server Website Upgrade				\$ 5,000

IT Support/Services		Streets	Water	WWTP	Sewers
	Cityworks Upgrade to Server		\$ 13,200	\$ 3,300	\$ 3,300
	OFGISAPPS / PW GIS Server / 2 Year Warranty		\$ 835	\$ 210	\$ 210
	GIS Image Server(s) Service Provider(s) (2 Blades)		\$ 4,840	\$ 1,210	\$ 1,210
	New World Custom Reports		\$ 5,000		
	iPad (2)		\$ 800	\$ 400	\$ 400
	Hardware/Software Maintenance		\$ 2,555	\$ 640	\$ 640
	IT - General Contribution - IT Training				
	IT - General Contribution - UPS Replacement WIFI Hub (State Street Tower)				
	IT - General Contribution - EMC Data Domain Backup				
	IT - General Contribution - Cisco WAN Upgrade				
	IT - General Contribution - Off Site Backup/T1/Disk Image Project				
	IT - General Contribution - Cisco Router/Disk Image Project	\$ 5,685	\$ 18,960	\$ 3,705	\$ 3,705
	WWTP Bldg(s) WiFi interconnects / VoIP			\$ 6,000	
	Cisco 1841 Router WWTP (VoIP failover to DSL)			\$ 1,100	\$ 1,100
	DSL Connection (WWTP & Ops) / VoIP Failover			\$ 710	\$ 710
	SAN Disk Tray (4TB Storage) (Sewer Cam/GIS)		\$ 7,000	\$ 3,000	\$ 26,500

Engineering Services		Streets	Water	WWTP	Sewers
	Illinois Traffic Enhancement Program Design-Rhutasel	\$ 50,000			
	Old Collinsville Road Staking - Rhutasel	\$ 25,000			
	Porter-Simmons Roundabout Staking	\$ 10,000			
	Milburn School Road Staking - Rhutasel	\$ 25,000			
	Venita Drive Water Main Extension, Sports Park to Hwy 50		\$ 21,500		
	PW Compound 1MG Water Storage Tank Repair & Inspection Services		\$ 40,000		
	Review Services Related to Development/Rehabilitation		\$ 15,000		
	St Clair Square Elevated Water Storage Tank Restoration/Active Mixing Device		\$ 40,000		
	Pressure Reducing Valves or Stations		\$ 4,000		
	HMG for Disinfection and Headworks Replacement			\$ 200,000	
	Miscellaneous.Consulting Services			\$ 15,000	
	I&I Consulting - Gonzalez				\$ 10,000
	Gonzalez for Trunk Main Project				\$ 15,000
	Rhutasel Services for Venita Drive Sewer Main Relocation				\$ 15,000
	Gonzalez for 2nd/3rd Street Alley Sewer Main Replacement				\$ 20,000
	Sherbut, Carson, Claxton for Hwy 50 Sewer Main Replacement				\$ 15,000
	Sherbut, Carson, Claxton for Hilgard-Augusta Sewer Main Replacement				\$ 40,000
	Gonzalez for Trunk Main Project				\$ 40,000

Services/Reviews		Streets	Water	WWTP	Sewers
	Gateway Geospatial Locating (Keri)	\$ 14,550	\$ 24,000		\$ 10,000
	Third Party Laboratory Analysis		\$ 20,000	\$ 40,000	
	Illinois-American Lab Analysis		\$ 4,000		
	Maxon Svcs for Backflow Device Testing & Servicing		\$ 5,000		
	Burns & Mac GIS Assistance	\$ 14,850	\$ 24,000		\$ 35,000
	Pest Control		\$ 400	\$ 4,000	
	VIDAC		\$ 12,000		\$ 15,000
	Document Shredding		\$ 400		
	Oce Large Format Printer Maintenance	\$ 660			\$ 450
	Miscellaneous Services	\$ 15,440			\$ 25,000

Vehicles		Streets	Water	WWTP	Sewers
	Replacement for Unit #10 - PU Truck (F-150, AT)	\$ 20,000			
	Replacement for Unit #3 (Ford Transit, AT)		\$ 23,000		
	Replacement of Unit #28 - Utility Bed, Bucket Truck (AT)	\$ 60,000	\$ 20,000	\$ 10,000	
	Replacement of Unit #62 - Chevy Blazer w/Ford Escape (AT)		\$ 10,000	\$ 10,000	\$ 3,000

Equipment		Streets	Water	WWTP	Sewers
	Brush Hog 2710 Mower w/10' Offset	\$ 7,000		\$ 5,750	
	Light Kit with Genset & Trailer		\$ 25,000		
	Utility Tractor, 125 hp pto, FW Assist	\$ 15,000	\$ 25,000	\$ 25,000	
	Wide Format Printer for Utility Billing		\$ 6,000		\$ 4,000
	Portable Highway Message Sign	\$ 2,000	\$ 18,000		\$ 4,000
	Xerox 6204, Digital Document System (Large Format Scanner/Printer)	\$ 4,000	\$ 8,000		\$ 4,000
	Dry Hill Pump			\$ 18,000	
	Replace CCTV Inspection Camera & Tractor System				\$ 45,000

Extensions - Capital Improvements		Streets	Water	WWTP	Sewers
	Venita Drive Water Main Extension, Sports Park to Hwy 50		\$ 134,000		
	Seven Hills Water Storage Active Mixing Device		\$ 36,000		
	Singer Valve Installation at PW Compound Booster Pump Station		In House		

Improvements Other Than Bldgs		Streets	Water	WWTP	Sewers
	LED Display for City Hall Marque Sign	\$ 2,000	\$ 12,000		\$ 6,000
	Open Storage Bins, Phase 2	\$ 15,000			
	SCADA Upgrades			\$ 50,000	
	Variable Speed Drive/Blower Motor Replacement			\$ 80,000	

In Lieu of Taxes		Streets	Water	WWTP	Sewers
	Contribution		\$ 411,900	\$ 87,200	\$ 86,120
Loan Payments		Streets	Water	WWTP	Sewers
	Computers	\$ 14,080	\$ 20,019		\$ 11,150
	Booster Pump Station		\$ 60,770		
	Water Towers		\$ 350,632		
	WWTP Upgrade - 1997			\$ 541,420	
Bond Payments		Streets	Water	WWTP	Sewers
	Automated Meter Read Transfer		\$ 386,210		

Water and Wastewater Revenue Projections

FY12 Water Operations Revenue						
			2011	2011	2012	
31-00 (Old Funds 31-00, 30-00, and 21-00)			Adopted	Predicted	Proposed	Note
31-00-3054	State Grants		0	34,174		
31-00-3072	Il Funds Interest		1,000	0		
31-00-3430	Penalties		20,000	29,616	25,000	
31-00-3500	Green Mount Lakes Apts		26,000	27,768	28,000	
31-00-3501	Water Sales		8,000,000	7,808,427	7,915,415	1
31-00-3521	Meter Tests		1,000	0	100	
31-00-3530	Bulk Water Sales		1,000	816	500	
31-00-3531	Caseyville Turn Off Fee			7,700	10,000	
31-00-3532	Caseyville Loss Revenue			1,743	2,500	
31-00-3535	Turn-on Fees		35,000	46,411	45,000	
31-00-3536	N.S.F. Checks		4,000	4,532	4,000	
31-00-3537	New Service Charge		100,000	113,920	120,000	
31-00-3538	Lien Fees		1,000	1,330	1,200	
31-00-3539	Tampering Fees		3,000	4,139	4,000	
31-00-3540	Water Tap-on Fees		300,000	720,000	500,000	
31-00-3545	Sprinklers		40,000	2,806	40,000	
31-00-3546	Fire Hydrant Rental		30,000	33,564	30,000	
31-00-3763	Checking Account Interest		7,120	18,840	15,000	
31-00-3765	Loan Proceeds			182,610	0	2
31-00-3823	Misc. Income		10,000	237,667	10,000	
31-00-3826	Extension Receipts		20,000	21,000	0	
31-00-3903	Transfer from General Fund (Snow)				9,000	
31-00-3948	Transfer from Reserve		361,500		709,430	3
			\$8,960,620	\$9,297,063	\$9,469,145	

- Notes:
- 1 Assumes no increase in usage over dry year in FY11 and no CPI change in October 2011.
 - 2 Revolving Loan Proceeds, IEPA Low Interest Loan
 - 3 Transfer of cash generated from previous years to cover requirements in budget year.

FY12 Wastewater Revenue							
34-00 (Old 24-00, 33-00, and 34-00)				2011	2011	2012	
				Approved	Predicted	Proposed	Notes
34-00-3054	State Grant			0	103,768	0	
34-00-3430	Penalties			8,000	15,105	13,000	
34-00-3460	Users Charge			900,000	935,699	970,000	1
34-00-3508	BOD Service Charge			170,000	112,446	90,000	5
34-00-3510	Sewer Sales			3,300,000	3,338,249	3,500,000	2
34-00-3520	Sewer Excavation Permit				160	0	
34-00-3540	Sewer Tap-on Fees			40,000	93,914	75,000	3
34-00-3761	Shiloh Valley Sewer			220,000	194,367	200,000	4
34-00-3903	Transfer from General Fund (Snow)					3,000	
34-00-3914	Transfer from Sewer Revenue			257,120	-	379,120	
				\$4,895,120	\$4,793,708	\$5,230,120	

Notes	1	Based on new Oct 2010 rates in effect for 12 months				
	2	Based on new Oct 2010 rates in effect for 12 months				
	3	Always a worry, not sure where housing market is going or commercial development				
	4	Shiloh rate is going down for CY11				
	5	PET Dairy to reduce BOD loading on O'Fallon WWTP.				

**That is the end for Streets,
Water and Wastewater !**

Questions?

Please look over detail sheets and
send any other questions to me
at
dsullivan@ofallon.org

Prop S

$\frac{1}{2}$ % Sales Tax

On General Merchandise

FY12 Proposition S Infrastructure Revenue				2011	2011	2012
14-00				Adopted	Predicted	Proposed
14-00-3072	Interest Earned			\$1,000	\$1,700	\$1,000
14-00-3053	Sales Tx 1/2 Cent			\$1,600,000	\$1,600,000	\$1,650,000
14-00-3059	Grant				\$89,000	
14-00-3930	Transfer from Bond Monies			\$0	\$0	\$0
14-00-3948	Transfer from Reserves					\$505,275
				\$1,601,000	\$1,690,700	\$2,156,275
FY12 Proposition S Infrastructure Expenses				2011	2011	2012
14-01				Adopted	Predicted	Proposed
14-01-4130	Maintenance Streets			\$173,720	\$100,000	\$586,825
14-01-4140	Maintenance Sidewalks			\$105,000	\$90,000	\$80,000
14-01-4141	Maintenance Stormwater			\$550,000	\$90,000	\$894,000
14-01-4145	Misc. Concrete Repairs			\$50,000	\$15,000	\$50,000
14-01-4370	Engineering Services			\$269,105	\$120,000	\$130,000
14-01-4790	Transfers for Bond Retirement			\$453,175	\$453,175	\$415,450
				\$1,601,000	\$868,175	\$2,156,275

FY 2012 Prop S Itemization					
14-01-4130	Maintenance Streets				
	Weil Road Repair				\$ 150,000
	Oberneufemann RR Crossing Improvement				\$ 216,825
	Central Drive Repair, Phase 1				\$ 220,000
					\$ 586,825
14-01-4140	Sidewalks				
	General Sidewalk Repair & Extension - CY2011				\$ 80,000
					\$ 80,000
14-01-4141	Stormwater				
	Jamestown Stormwater Culvert Lining				\$ 165,000
	Southview Drainage Repairs (Grant)				\$ 89,000
	Matthew Culvert Repair				\$ 640,000
					\$ 894,000
14-01-4145	Misc. Concrete Repairs				
	General Concrete Repair				\$ 40,000
14-01-4370	Engineering Services				
	Jamestown Culvert Pipe Lining				\$ 10,000
	Central Park Drive Repair				\$ 25,000
	Matthew Culvert Pipe Lining				\$ 15,000
	Southview Drive Culvert Repair				\$ 35,000
	Oberneufemann RR Crossing Improvement				\$ 15,000
	Seven Hills Crossing of Engle Creek				\$ 30,000
					\$ 130,000

MFT

Motor Fuel Tax

Based on Population

FY12					
MFT Revune			2011	2011	2012
16-00			Amended	Predicted	Proposed
16-00-3070	MFT Allotment		\$700,000	\$900,000	\$700,000
16-00-3072	IL Funds Interest		\$2,000	\$4,500	\$2,000
16-00-3831	Road Construction Shared		\$0	\$1,100	\$0
16-00-3903	Transfer from General Fund		\$100,000	\$0	\$84,640
16-00-3948	Transfer from Reserves		\$1,242,890	\$0	\$1,448,360
			\$2,044,890	\$905,600	\$2,235,000
FY12					
MFT Expense			2011	2011	2012
16-01			Adopted	Predicted	Proposed
16-00-4130	Maintenance Streets		\$40,000	\$34,000	\$60,000
16-00-4190	Snow Removal		\$30,000	\$60,000	\$30,000
16-00-4370	Engineering Services		\$300,000	\$320,000	\$370,000
16-00-4371	Construction Capital Expenditures		\$1,454,890	\$210,000	\$1,595,000
16-00-4390	Professional Services			\$55,000	\$10,000
16-00-4630	Right of Way		\$190,000	\$25,000	\$140,000
16-00-4670	Maintenance Supplies		\$10,000	\$5,000	\$10,000
16-00-4807	Easements		\$0	\$10,000	\$20,000
16-00-4900	Land		\$20,000		\$0
			\$2,044,890	\$719,000	\$2,235,000

FY 2012 MFT Itemization				
	16-00-4130	For Public Works Use		\$60,000
	Street Maintenance			
	16-00-4370	Old Collinsville Road Design		\$15,000
	Engineering	Venita/50 Design		\$30,000
		Hwy 50 Continuous Turn Lane		\$40,000
		ITEP, Interchange #14, I-64		\$45,000
		ITEP, Madison-Illini Bike Trail		\$60,000
		Porter-Simmons Roundabout		\$10,000
		Seven Hills/Vincennes Roundabout		\$40,000
		Venita Overpass		\$100,000
		Milburn School Road		\$30,000
				\$370,000
	16-00-4371	Milburn School Road		\$800,000
	Construction	Seven Hills-Old Vincennes Roundabout		\$200,000
		Porter-Simmons Roundabout		\$175,000
		Old Collinsville Road		\$420,000
				\$1,595,000
	16-00-4630	Venita Overpass		\$140,000
	ROW			\$140,000

Facilities

General Fund

City Hall, Old City Hall, Museum, Depot, 200 S. Lincoln
And Other Common Use Areas/Facilities

FY 12 Facilities Budget Itemization						
	4100	Cleaning Services for 200 S. Lincoln				\$ 20,000
	Maintenance Buildings	City Hall Roof Replacement				\$ 120,000
						\$ 140,000
	4120	Replacement of HVAC Unit				\$ 35,000
	Maintenance Equipment					
	4340	ESRI (GIS) License				\$ 2,000
	Computer Services	Cityworks License				\$ 1,500
						\$ 3,500
	4370	Misc. Work Items				\$ 10,000
	Engineering Services					
	4833	Replacement of Unit #28 - Utility Bed, Bucket Truck (AT) (\$87,500 Total)				\$ 7,500
	Vehicles					
	4884	LED Display for City Hall Marque Sign (Total \$24,000)				\$ 6,000
	Improvements Other Than Bldg					