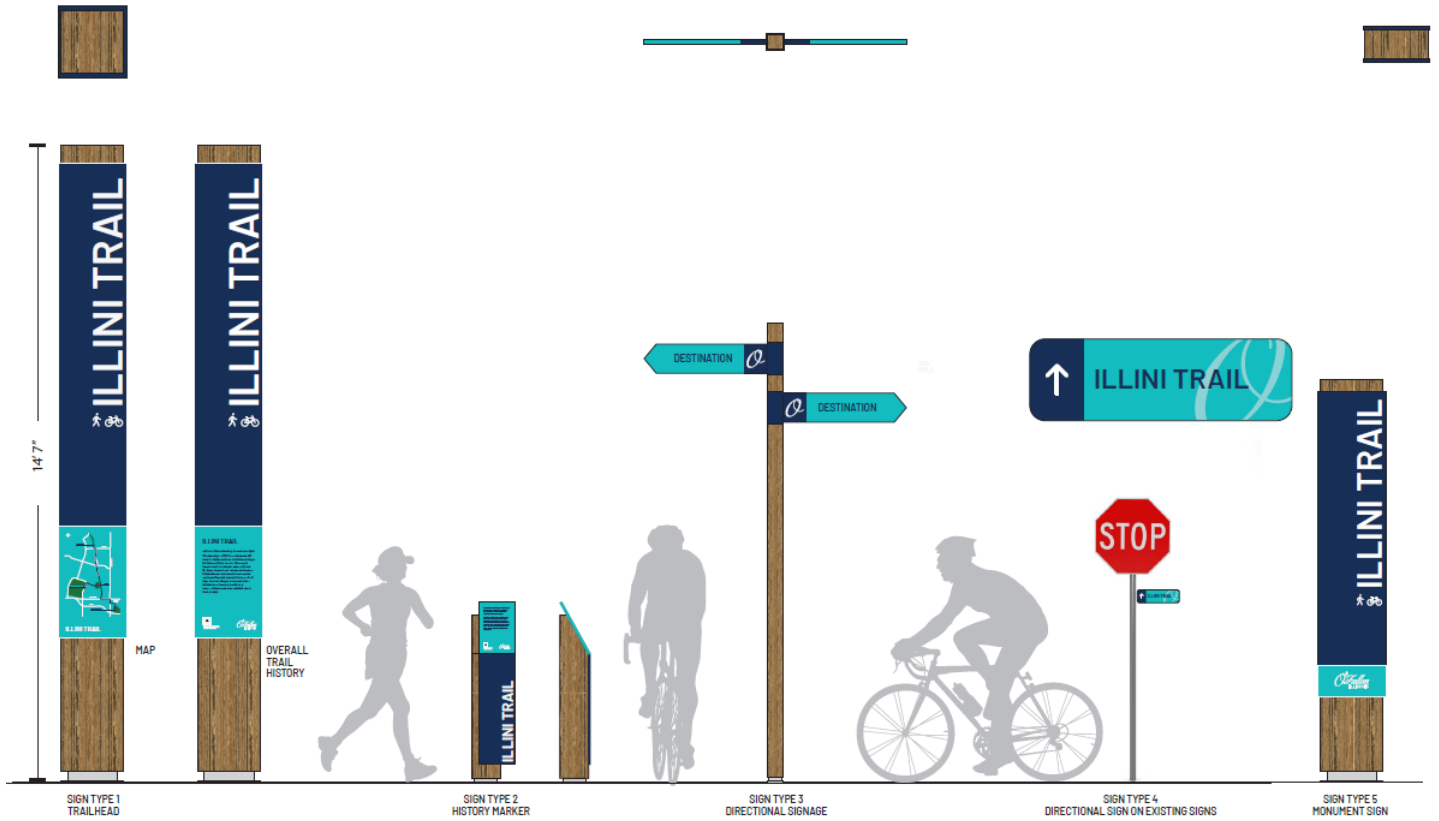


REQUEST FOR PROPOSALS

Illini Trail Sign Package

PLAN VIEW



SEPTEMBER 29, 2023
CITY OF O'FALLON, ILLINOIS
255 S. Lincoln Ave
O'Fallon, Illinois 62269

O'FALLON, ILLINOIS REQUEST FOR PROPOSAL

The City of O'Fallon is requesting proposals for the BUILD AND INSTALLATION OF A TRAIL SIGN PACKAGE for the Illini Trail (bicycle/pedestrian trail) in the City of O'Fallon as outlined below. Please read this entire package and submit your proposal in accordance with these instructions. Proposals improperly prepared and submitted may be rejected.

DESCRIPTION OF PROJECT: The City of O'Fallon is seeking proposals from qualified companies for the fabrication and installation of Trail Signage in the City of O'Fallon, IL. The Sign package consists of the following signs:

- Two "Trailhead" style (Type 1) signs
- Three "History Marker" style (Type 2) signs
- Thirteen "Directional" style (Type 3) signs (with sign posts)
- Seven "On Existing" style (Type 4) signs
- Five "Monument" style (Type 5) signs

Refer to Appendix "A" for sign specifications.

Refer to Appendix "B" for sign locations.

GENERAL SPECIFICATIONS: Please send all proposals to:

O'Fallon City Clerk
RE: City of O'Fallon Illini Trail Sign Package
O'Fallon City Hall
255 South Lincoln Avenue
O'Fallon, Illinois 62269

Deadline for submissions is November 17, 2023 at 4:30 PM. Proposals will be evaluated beginning on November 20, 2023.

Questions can be directed to Ryan Auer at rauer@ofallon.org

Provisions: The City of O'Fallon retains the right to reject any or all proposals, to waive technicalities, and accept the proposal which they believe to be the most advantageous to the City.

INTRODUCTION AND BACKGROUND

Throughout the 2040 O'Fallon Master Plan, the community expressed great interest in expanding trails throughout O'Fallon. Developing new trails and making strategic connections between existing trails and parks can help expand the current trail system. The city is requesting the fabrication and installation of trail signage along the Illini Trail corridor. The trail signage is intended to enhance the pedestrian experience with simple and informative wayfinding components.

Staff will also work with the selected vendor to investigate any improvements or amendments to the sign package that would benefit the City.

All prospective consultants will be afforded full opportunity to submit statements of qualifications in response to this request and will not be discriminated against on the grounds of race, religion, color, national origin, age, sex, or disability in consideration for an award of any contract entered into pursuant to this notice.

This Request for Proposal (RFP) is an invitation by the City of O'Fallon for companies to submit an offer, which may be subject to subsequent discussion. It is not a request for competitive bid. Submittal of a proposal does not create any right in or expectation to a contract with the City of O'Fallon. The City of O'Fallon reserves the right to reject any or all proposals and the City further declares that it will incur no financial obligations for any costs by any company in preparation of their proposal.

Statement of Qualifications

To be considered, the company must be a full-service firm with expertise in sign fabrication and installation. The company should be able to demonstrate that its sign installation has been successfully implemented in at least three professional entities, preferably within the State of Illinois or St. Louis Metro area.

Selection Criteria

A selection committee will evaluate each submitted proposal to determine who may be invited for a design-build interview. The selection committee will recommend a project with one firm to the O'Fallon City Council. The City Council will provide final approval of the selection.

1. Proposals submitted will be evaluated using the following criteria:
 - a. Compliance with the RFP
 - b. Qualifications of the firm and experience in sign design and installation.
 - c. The selection committee's confidence in the ability of the proposer to satisfactorily provide the services required.
 - d. Cost; including proposed contract terms and fee schedule.

Overall Scope of Work

- Fabrication and installation of thirty signs (detailed in “Description of Project” section on page 2) in the City of O’Fallon, IL.
- Text and other designs shall be applied directly onto its intended sign.
- Signs will be constructed with sign faces affixed to supports.
- Signs will be constructed with reinforced, all-weather materials.
- Type 5 / “Monument Signs” must be constructed with latching/unlatching components and equipment for compatibility with existing bollard base(s).
- Signs installed at locations outlined in Appendix “B”
- Signs will be constructed in a manner that respects sizing described in Appendix “C”.

NOTE: Fabricator may offer sign sizing and materials recommendations, subject to approval by City of O’Fallon Staff.

Proposal Requirements

All proposals submitted in response to this request for proposals shall contain the following information in the stated order:

- Proposals must include the provided submission form as page one of the proposal.
- Description of the firm (corporation, partnership, etc.) and year established. Applicable experience.
- At least three references, where your firm has performed in the past three years, preferably other governmental units, including an individual contact name, name of organization and phone number that the City may contact regarding projects of similar size and content as outlined in this request (both union and non-union wage and classification systems and implementation approaches).
- The cost proposal shall include a breakdown of the company’s fees, and charges for services, by component part and for the total project. Include a proposed payment schedule, proposed contract terms and/or any proposals for annual maintenance of the plan.
- Provide a material list for the fabrication of the signs to ensure the signs will be weather resistant.
- The proposal shall clearly define, identify, and estimate the cost of any additional services and/or reimbursable services that the consultant did not include in the not to exceed lump sum cost.
- A statement ensuring validity of the proposal for at least ninety (90) days.

INSTRUCTIONS TO VENDORS

- RESPONSIBILITIES: It is the responsibility of the vendor to thoroughly examine and familiarize themselves with all aspects of the proposed project, including deadlines, site locations and any special requirements.

- INTERPRETATIONS: No oral interpretations made to any vendor will be binding. Requests for interpretations or changes must be made in writing to the Community Development office seven (7) or more working days prior to the published deadline date.
- GENERAL INFORMATION: Names and qualifications of corporate/company officers/owners. Company address/location(s) and other appropriate contact information. A brief history of the company.
- REFERENCES: Provide contact information for three individuals that have had experience with the vendor's company.
- METHOD OF SUBMISSION: There shall be a single submission for each proposal remitted. Alternatives may be submitted but must be in the form of a separate proposal. All submissions must use the provided form.

The City of O'Fallon retains the right to reject any or all proposals, to waive technicalities, and accept the bid which they believe to be the most advantageous to the City.

Provided Submission Form

Name of Company:

Address:

Name and Signature of Agent:

Title:

Contact Phone:

Contact Email:

Price for Four-Faced Trailhead Sign:

Price for Four-Faced Monument Sign:

Price for Two-Faced Directional Sign:

Price for Three-Faced Directional Sign:

Price for Single-Faced Historical Sign:

Price for Single-Faced On-Existing Sign:

Estimated Date for Delivery/Installation:

Examples of Work:

Remarks:

Please Include a Visual of any recommended variations from the sign package included in Appendix A with this submission.

Please include a material list for the fabrication of the proposed signs.

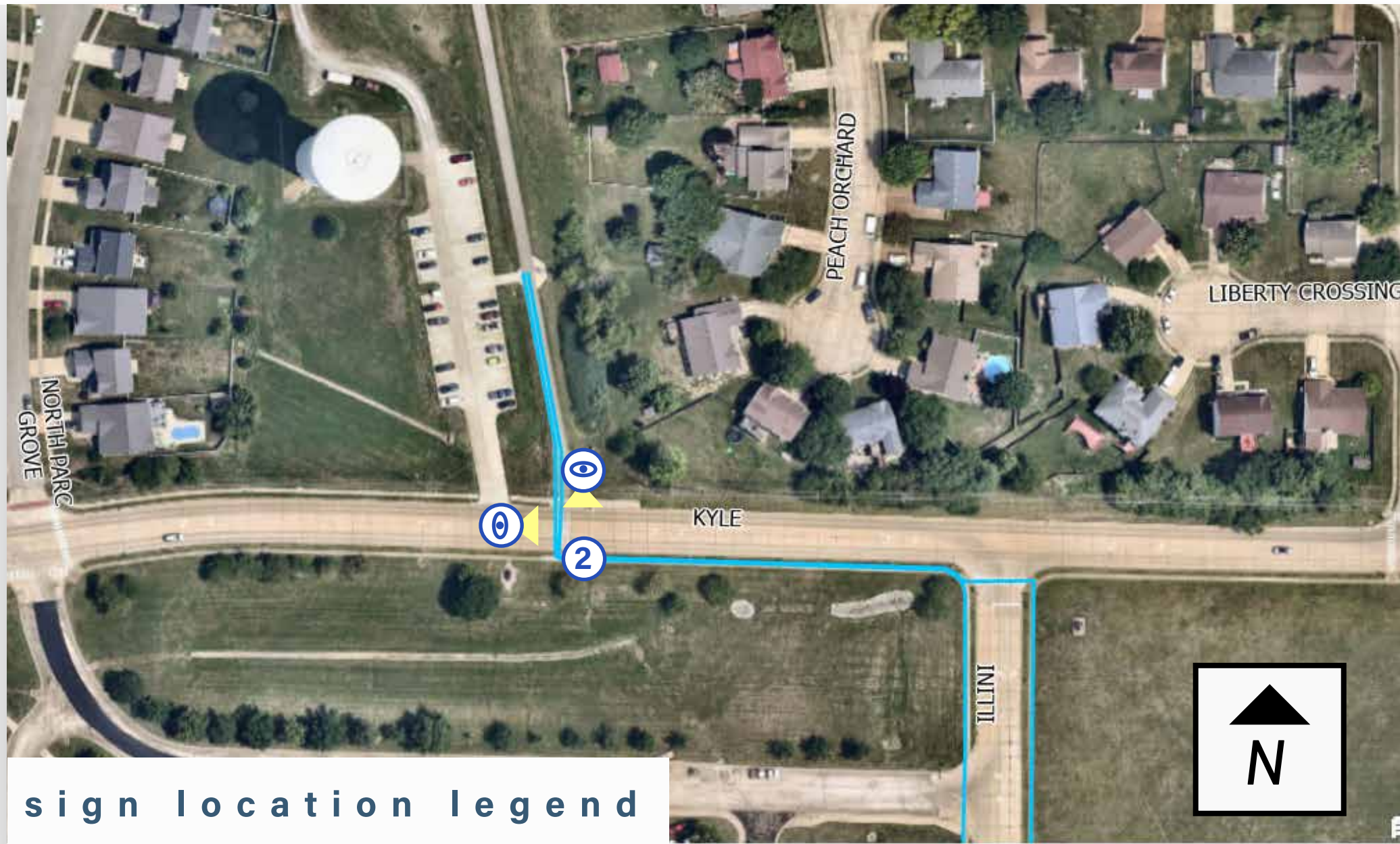
APPENDIX A

DETAIL OF SIGN LOCATIONS

(Remainder of Page Intentionally Left Blank)

O'Fallon Bike Master Plan:

Illini Trails Sign Locations



Kyle and Goshen Trail

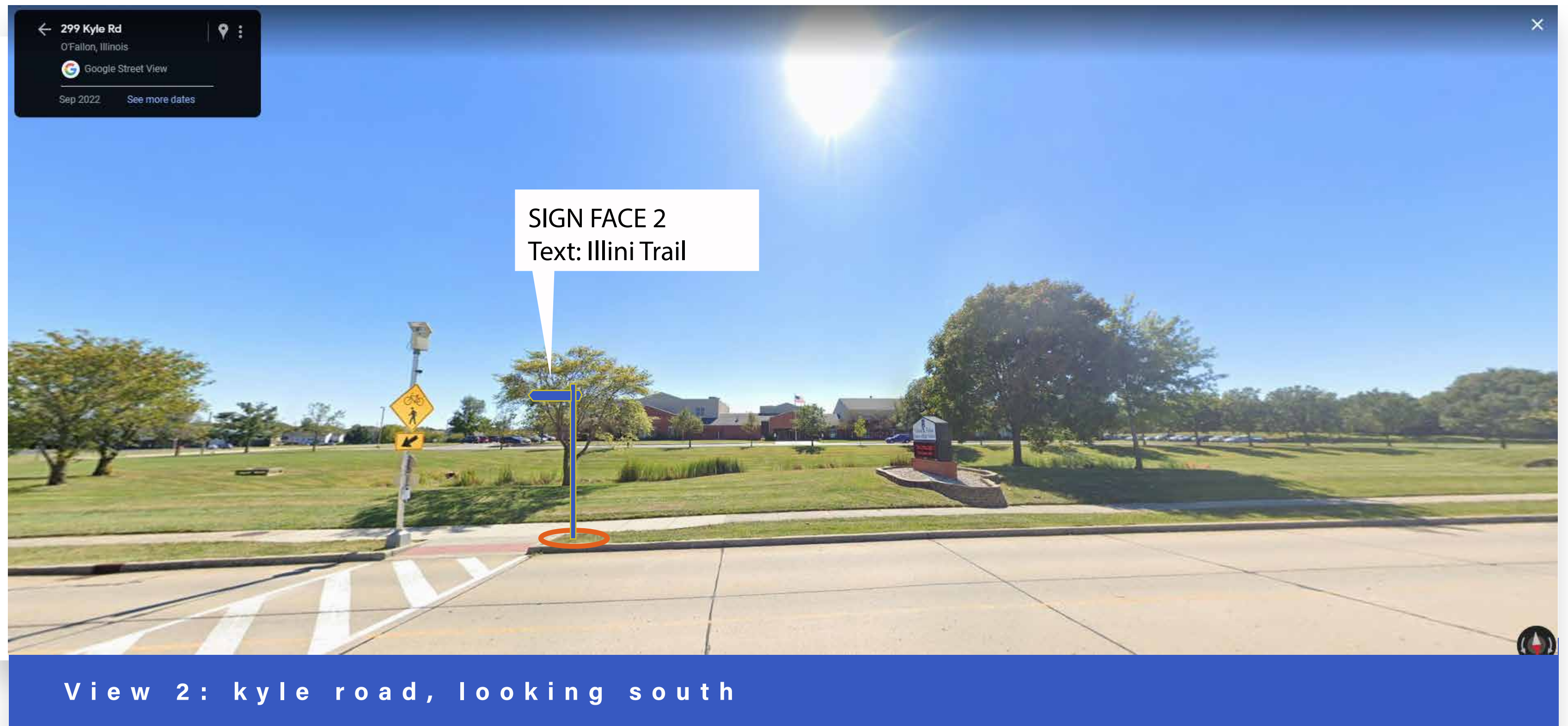
2 sign faces

1 : Sign type 3
Sign text : Goshen Trail

2 : Sign type 3
Sign text: Illini Trail



View 1: kyle road, looking east



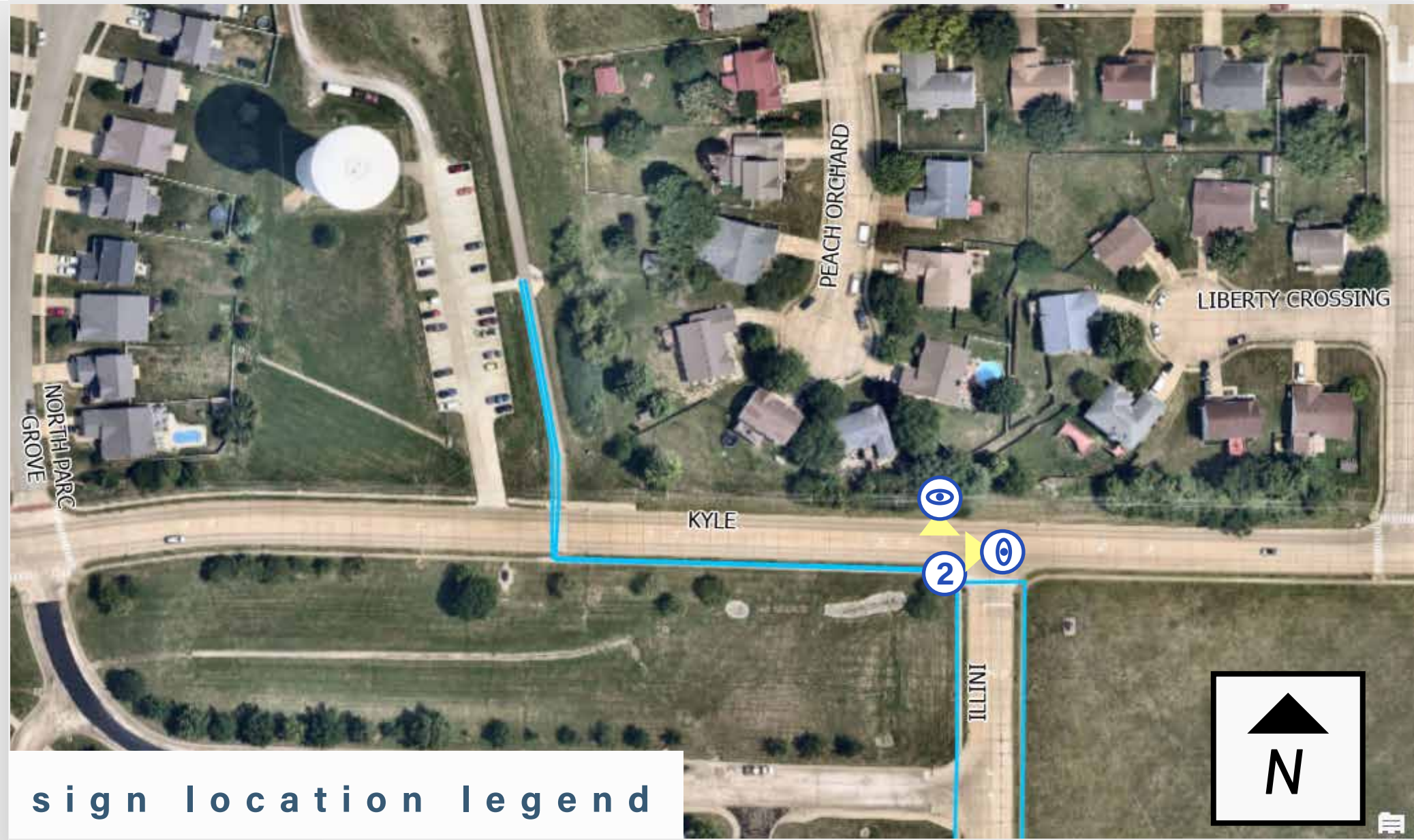
View 2: kyle road, looking south



Sign Type 3: Directional Signage

O'Fallon Bike Master Plan:

Illini Trails Sign Locations



Kyle and Illini Trails

2 sign faces

**1 : Sign type 3
Sign text : Illini Trail**

**2 : Sign type 3
text: Goshen Trail**



View 1: Illini Trail, looking west



View 2: Kyle road, looking south



Sign Type 3: Directional Signage

O'Fallon Bike Master Plan:

Illini Trails Sign Locations



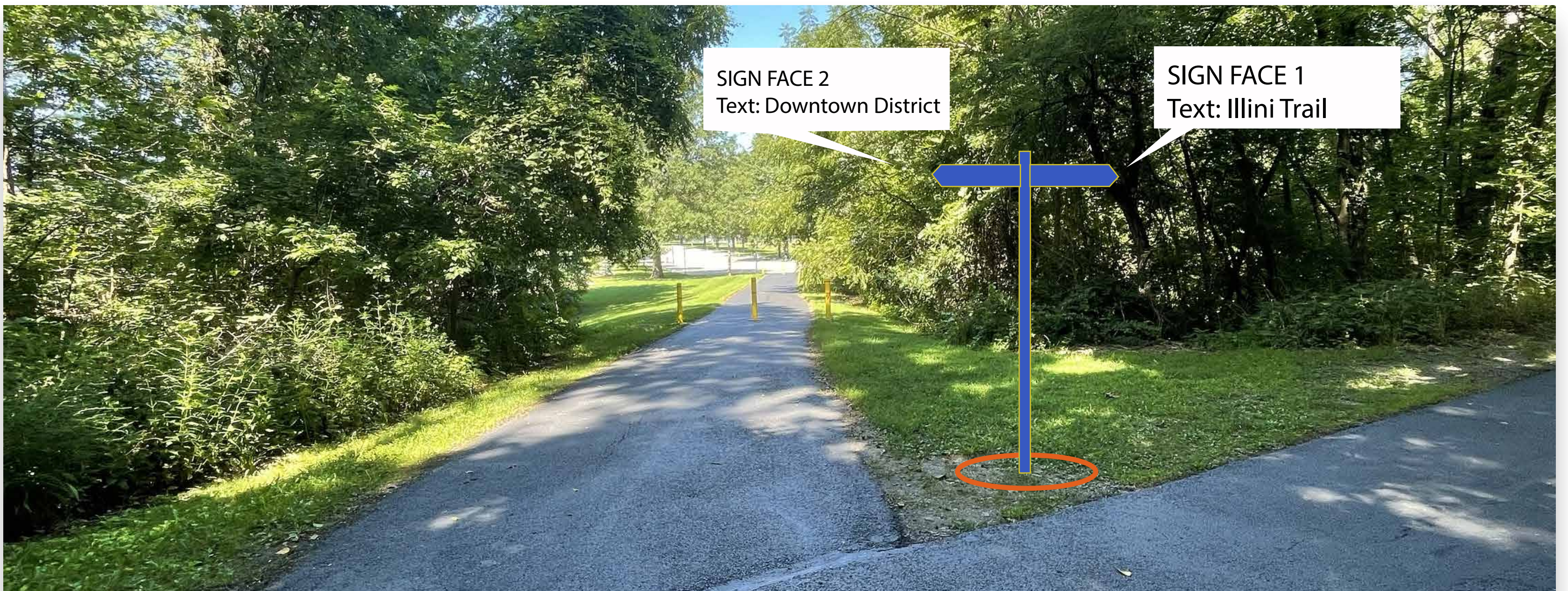
Hesse Park and Illini Trails

3 sign faces

1 : Sign type 3
Sign text : Illini Trail

2 : Sign type 3
Sign text: Downtown District

3 : Sign type 3
text: Hesse Park



View 1: Illini Trail, looking west



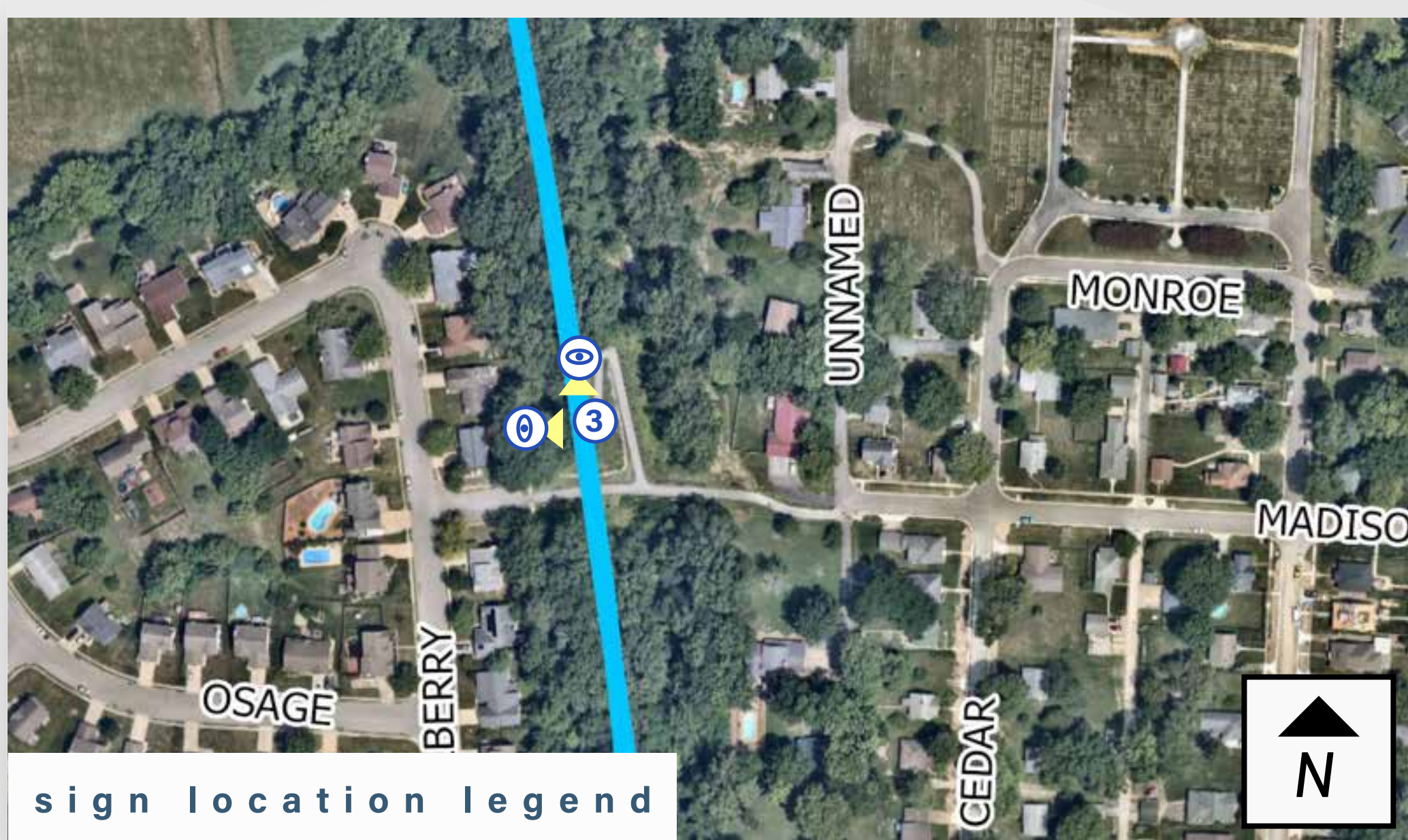
View 2: Illini Trail, looking south



Sign Type 3: Directional Signage

O'Fallon Bike Master Plan:

Illini Trails Sign Locations



Madison and Illini Trails

3 sign faces

1 : Sign type 3
Sign text : Goshen Trail

2 : Sign type 3
Sign text: Downtown District

3 : Sign type 3
Sign text : O'Fallon Cemetery



View 1: Illini Trail, looking east



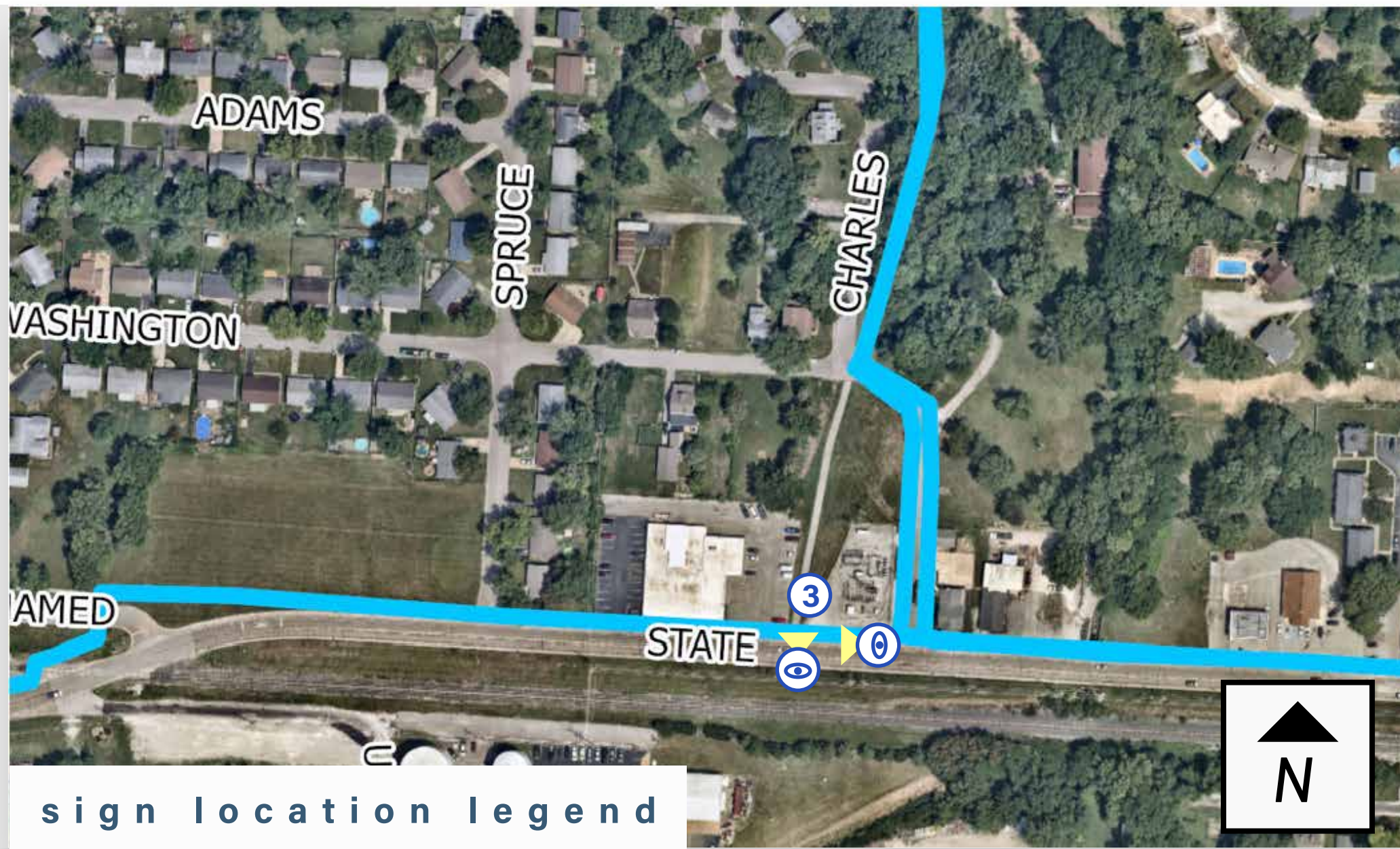
View 2: Illini Trail, looking south



Sign Type 3: Directional Signage

O'Fallon Bike Master Plan:

Illini Trails Sign Locations



State and Illini Trails

3 sign faces

1 : Sign type 3
Sign text : Sports Park

2 : Sign type 3
Sign text: Downtown District

3 : Sign type 3
Sign text : Illini Trail



View 1: Illini Trail & State Street, looking north



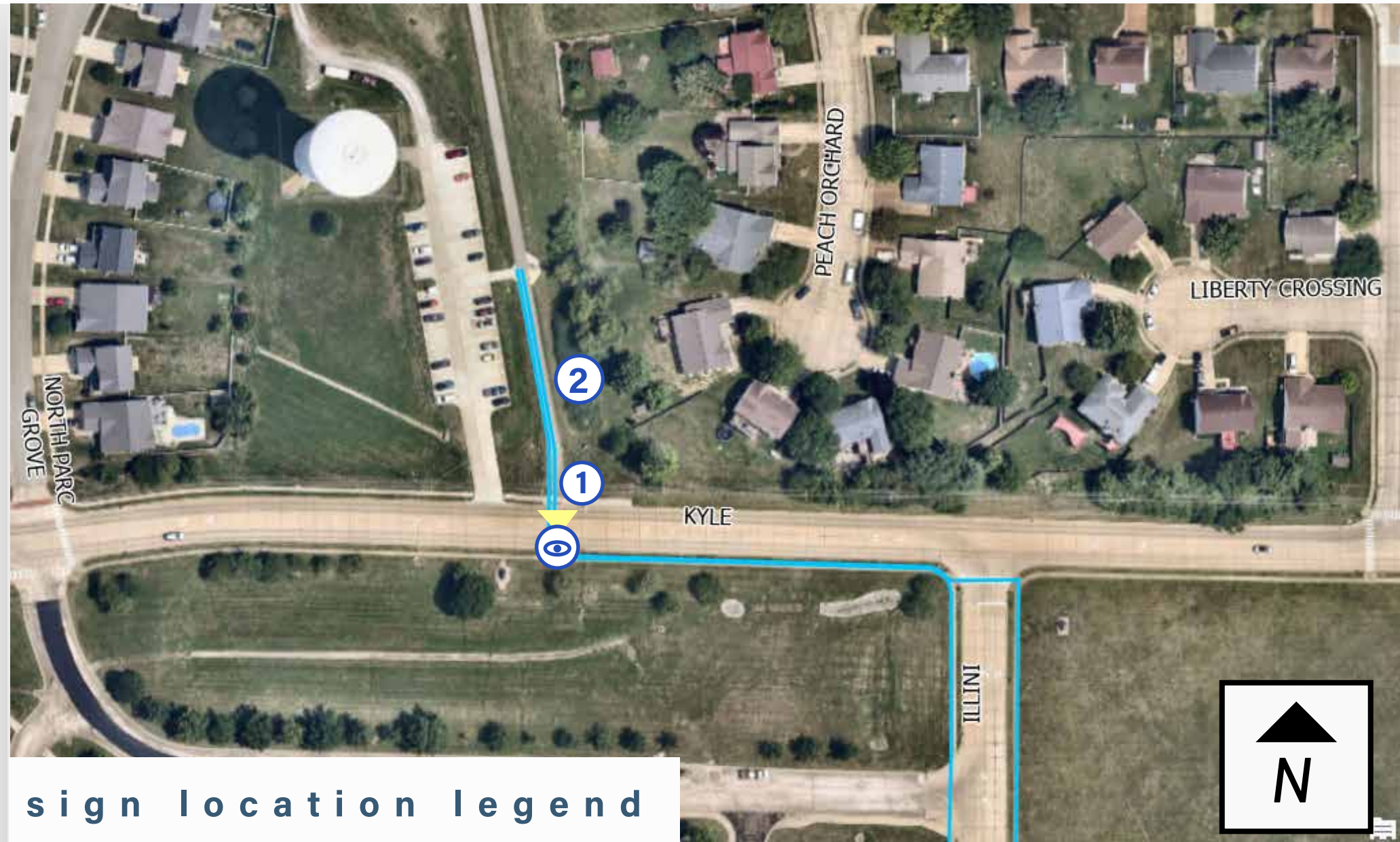
View 2: State Street, looking west



Sign Type 3: Directional Signage

O'Fallon Bike Master Plan:

Illini Trails Sign Locations



Kyle and Goshen Trail

2 signs

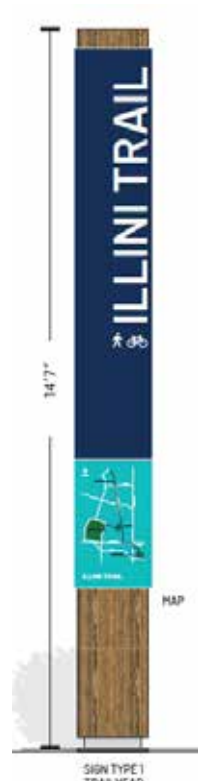
Sign 1: Sign type 1

Sign 2: Sign type 2

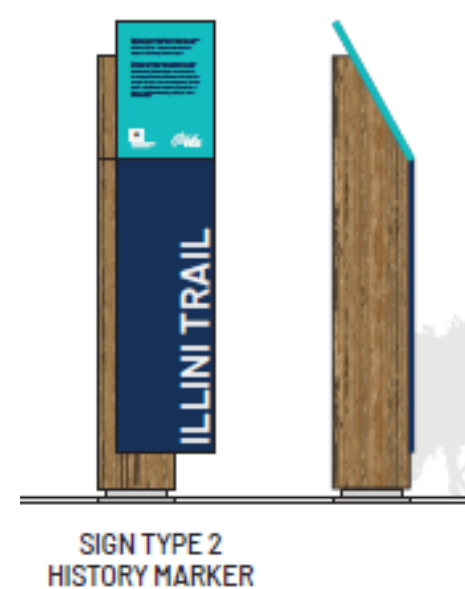


View 1: Illini Trail & State Street, looking north

Sign Content



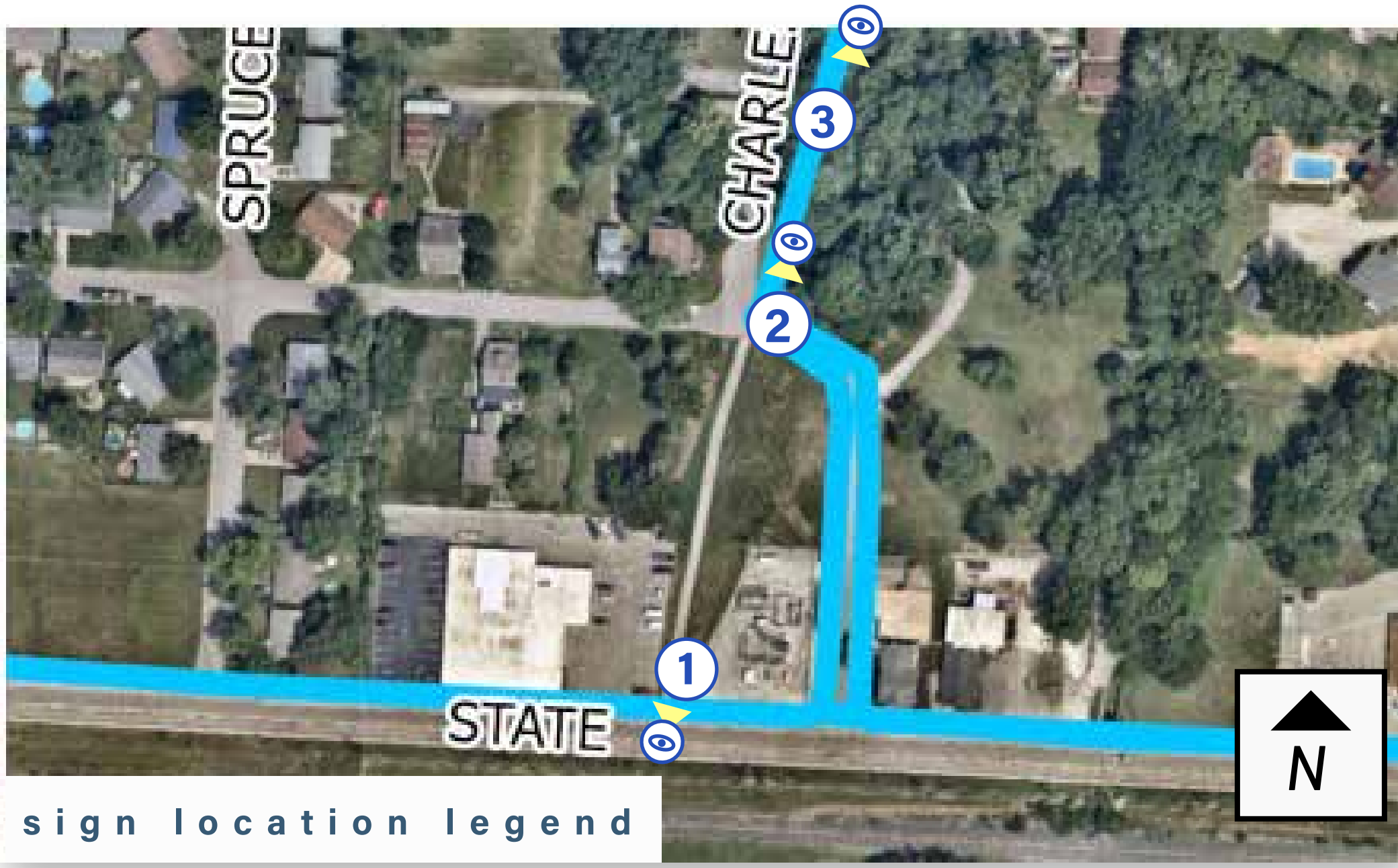
Sign 1
Sign Type 1: Trailhead



Sign 2
Sign Type 2: History Marker

O'Fallon Bike Master Plan:

Illini Trails Sign Locations



State and Illini Trail

3 signs

Sign 1 : Sign type 1

Sign 2 : Sign type 5

Sign 3 : Sign type 2



SIGN 1
Sign type 1

View 1: Illini Trail & State Street, looking north



SIGN 2
Sign type 5

View 2: Illini Trail & Charles Street, looking south



SIGN 3
Sign type 2

View 3: Illini Trail, looking south



Sign Type 1 : Trailhead



Sign Type 5: Monument Signage



Sign Type 2 : History Marker

SIGN TYPE 2
HISTORY MARKER

State and Illini Trail

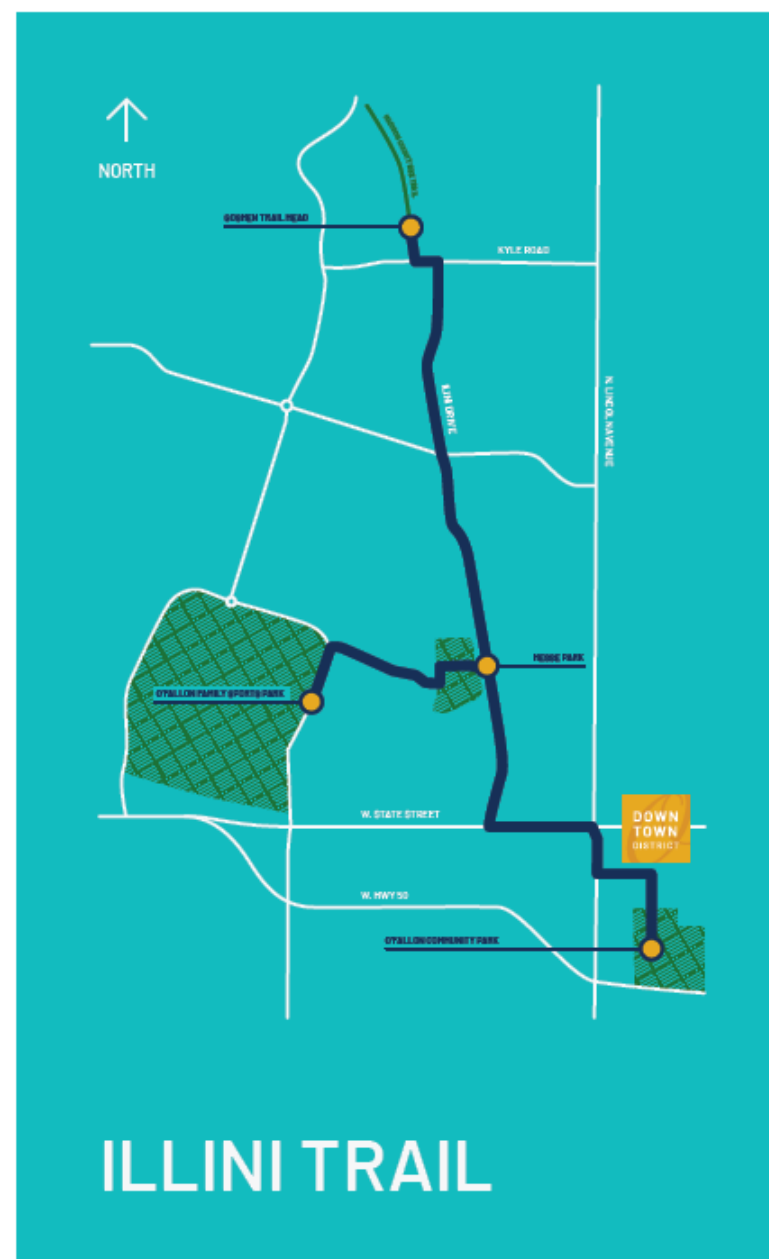
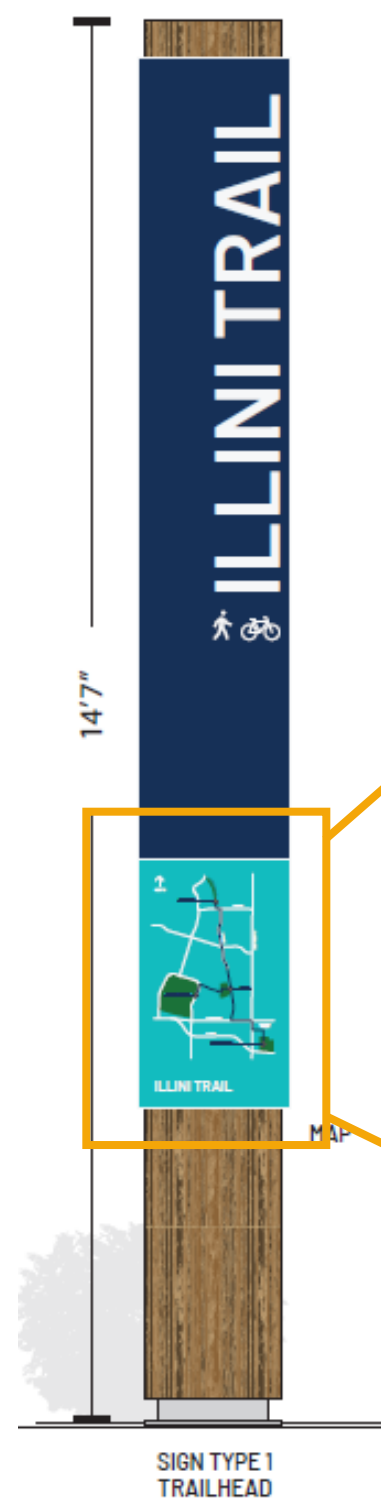
Sign Detail

Sign Content

Sign 1

Sign Type 1 : Trailhead

four sign faces: trail map content

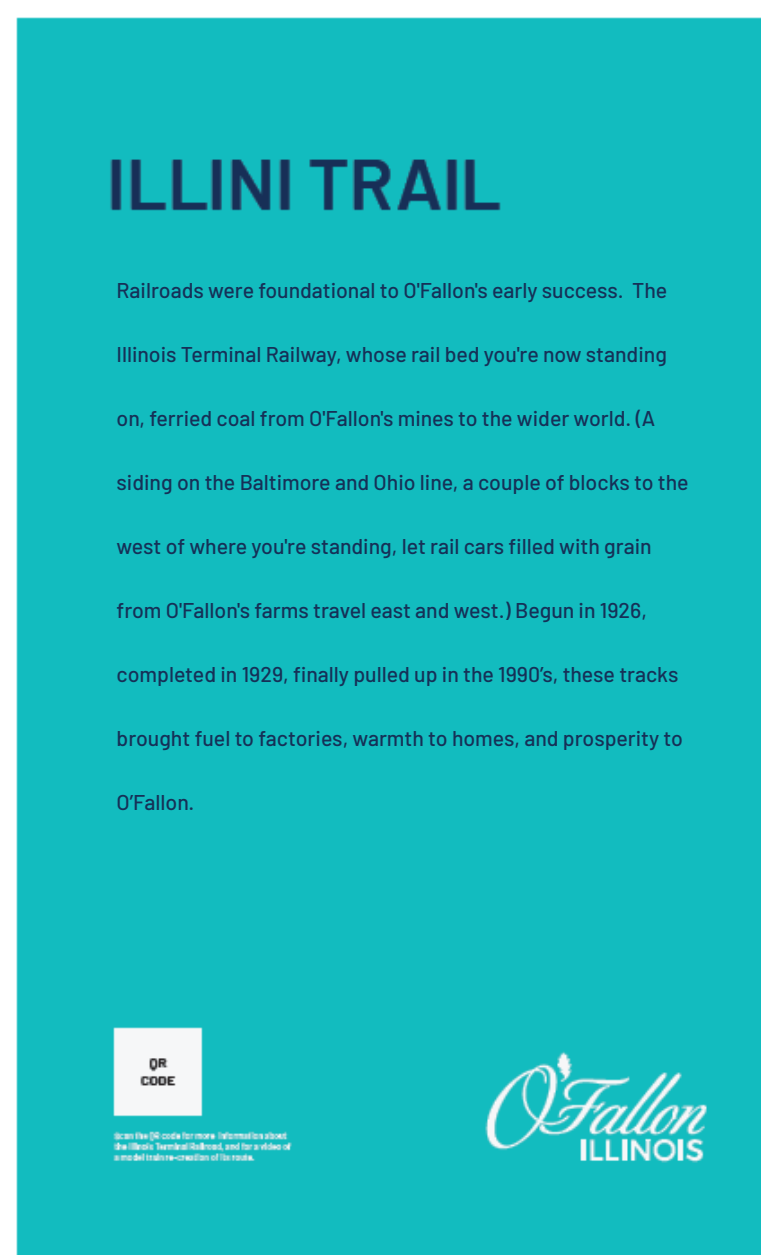
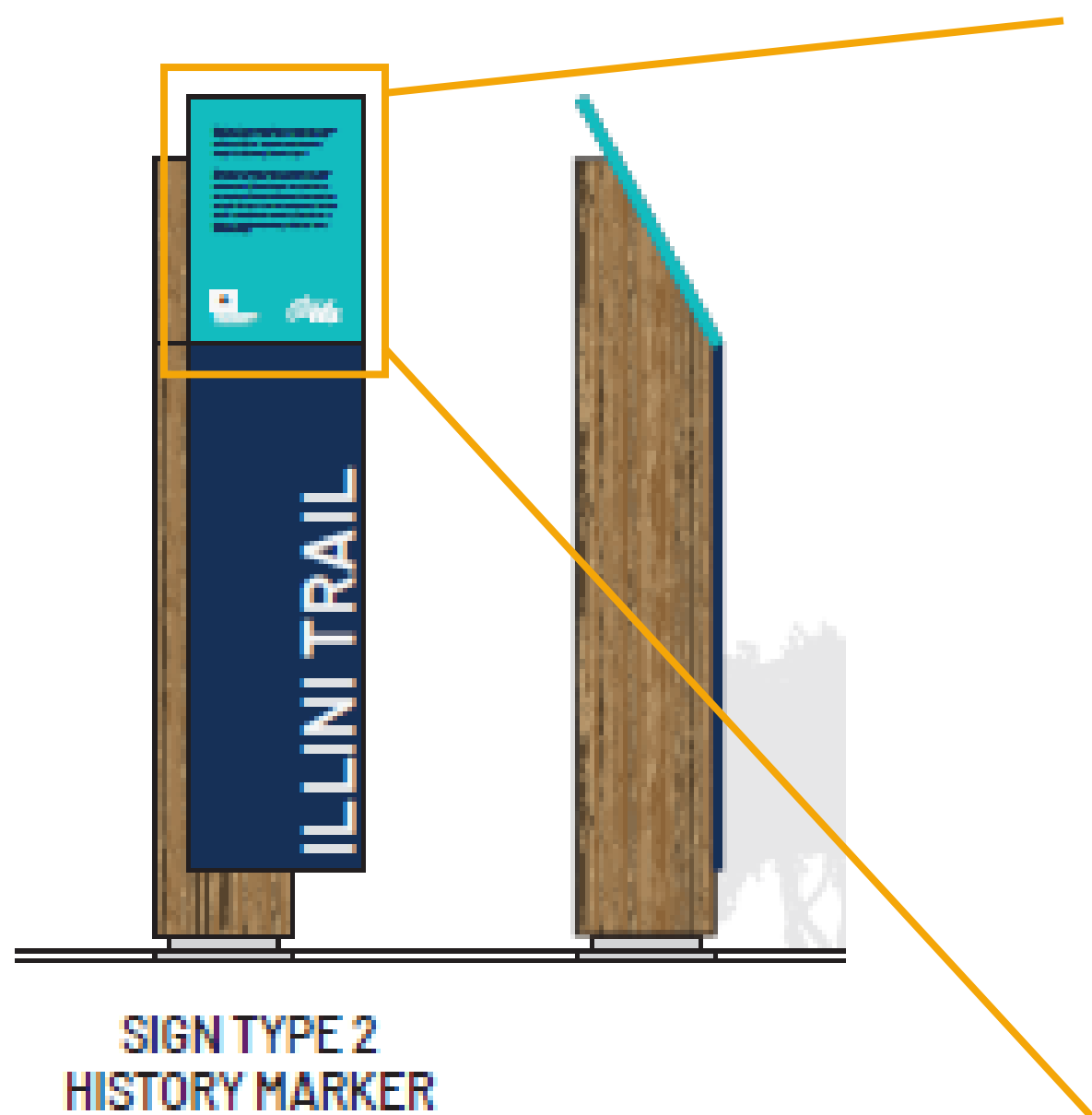


19" w x 31" t

Sign 2

Sign Type 2 : History Marker

sign face 1 : facing east towards kyle road



10" w x 13" H

REFER TO SIGN NARRATIVE #2
In "Sign Narratives" File

O'Fallon Bike Master Plan:

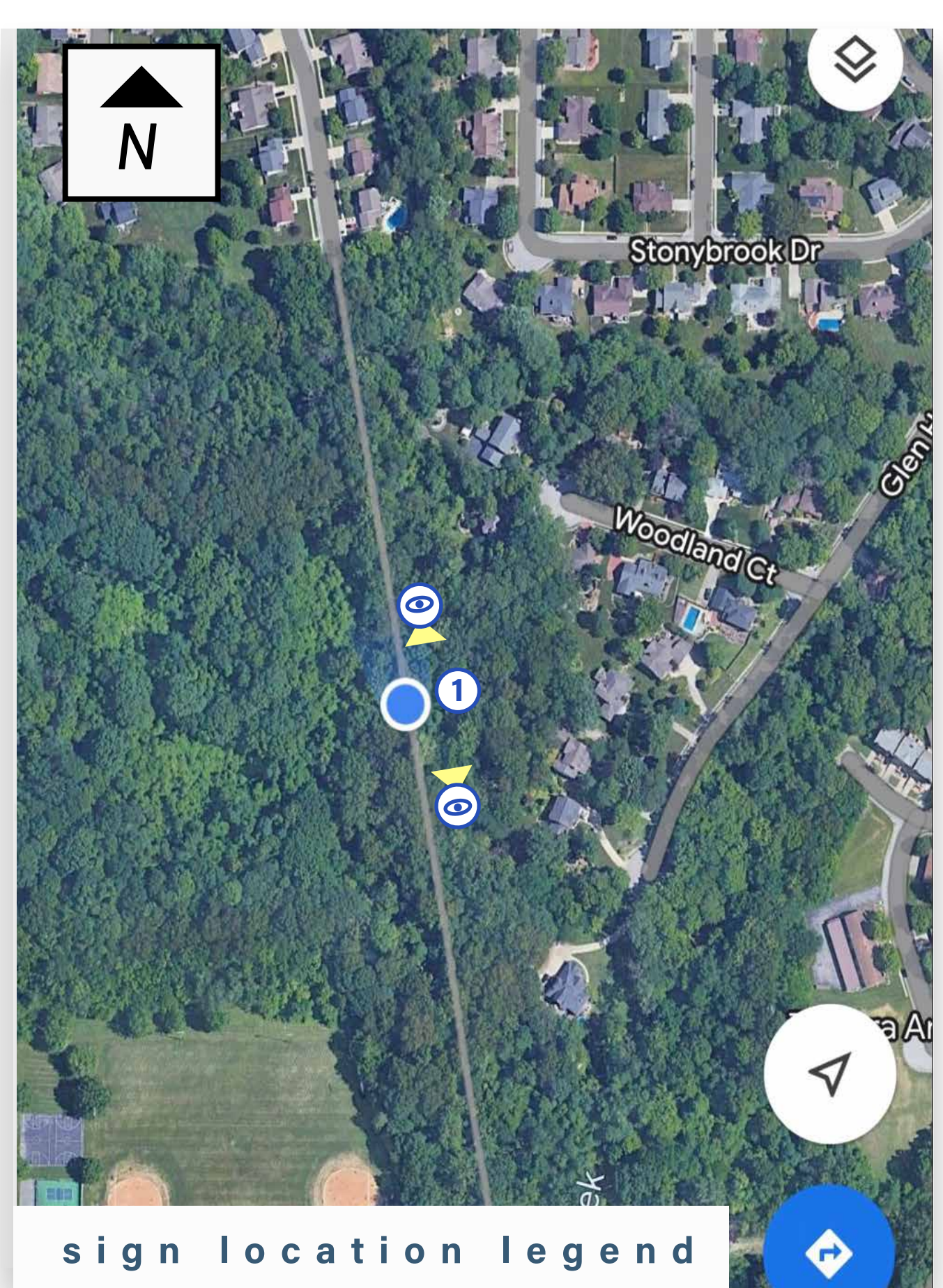
Illini Trails Sign Locations

North of Hesse Park and
North Illini Trails

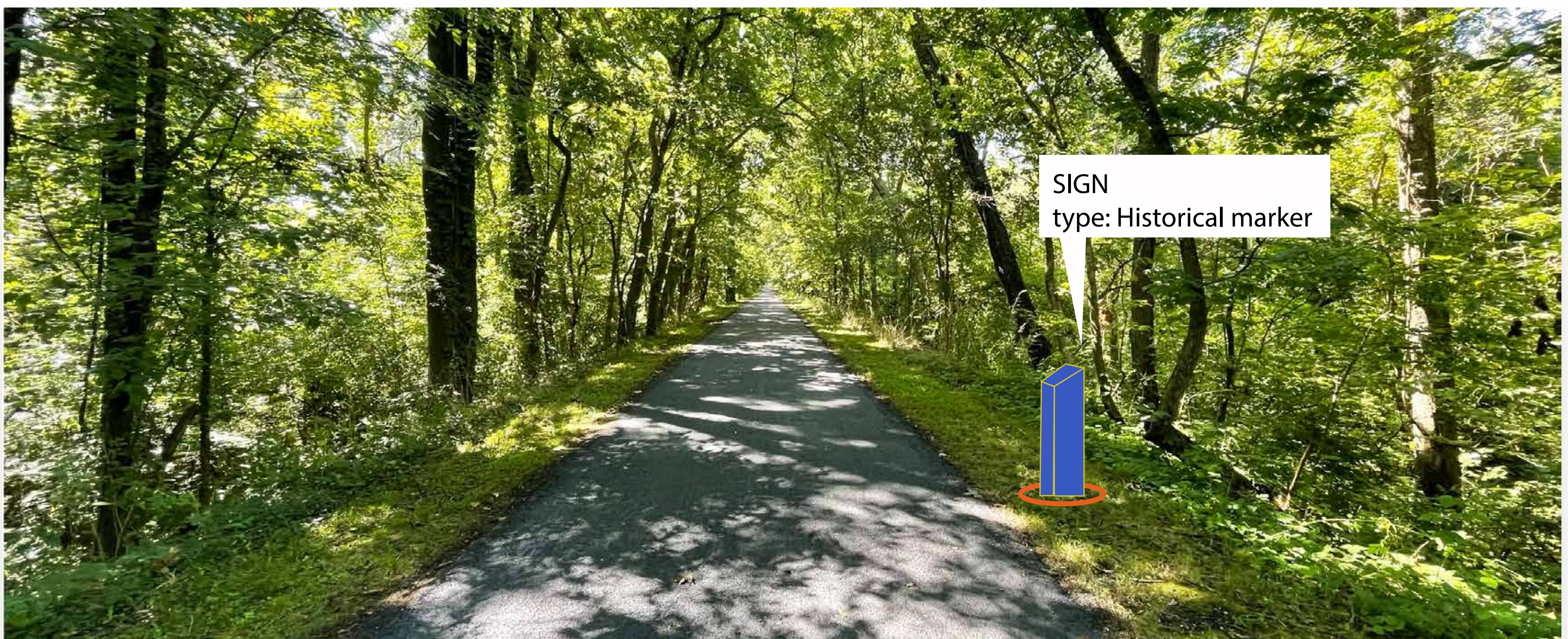
Coordinates:
(38.6024078, -89.9179683)

1 sign

Sign type 2, Historical Marker Sign

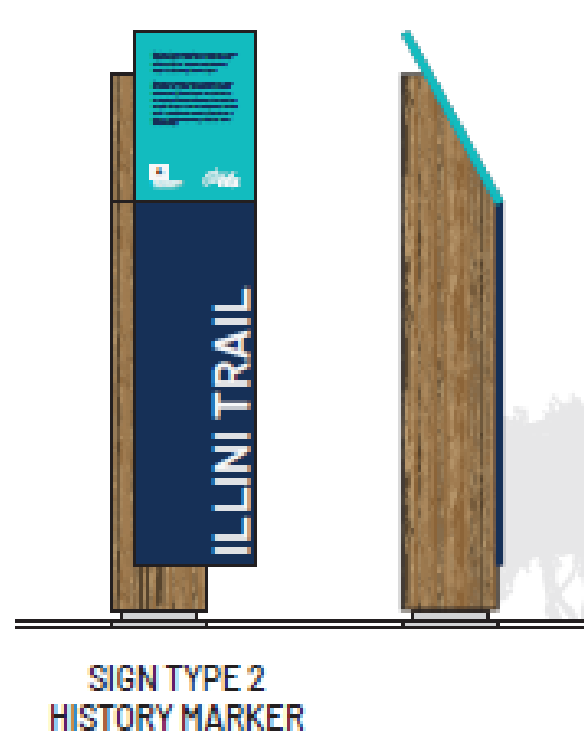


View 1: Illini Trail, looking north



View 2: Illini Trail, looking south

Sign Content



Sign

Sign Type 2 : History Marker

SIGN TYPE 2
HISTORY MARKER

North of Hesse Park and North Illini Trails

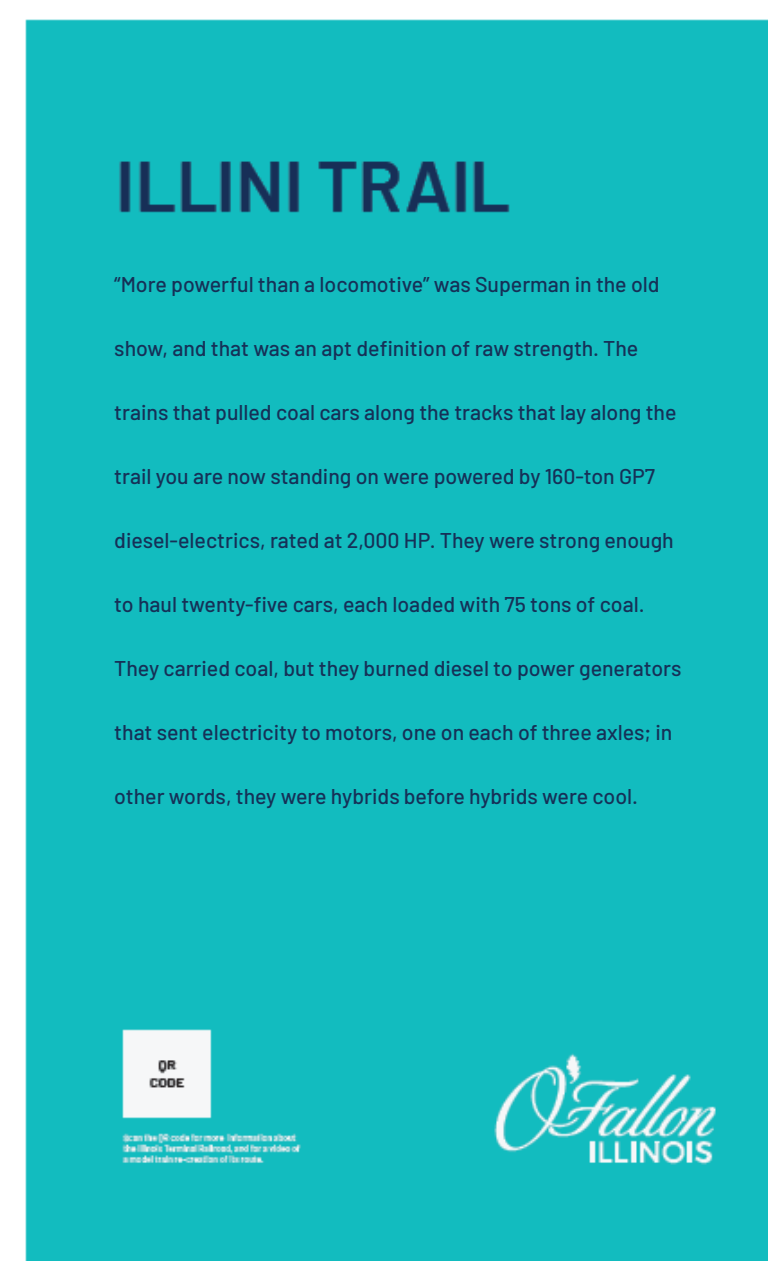
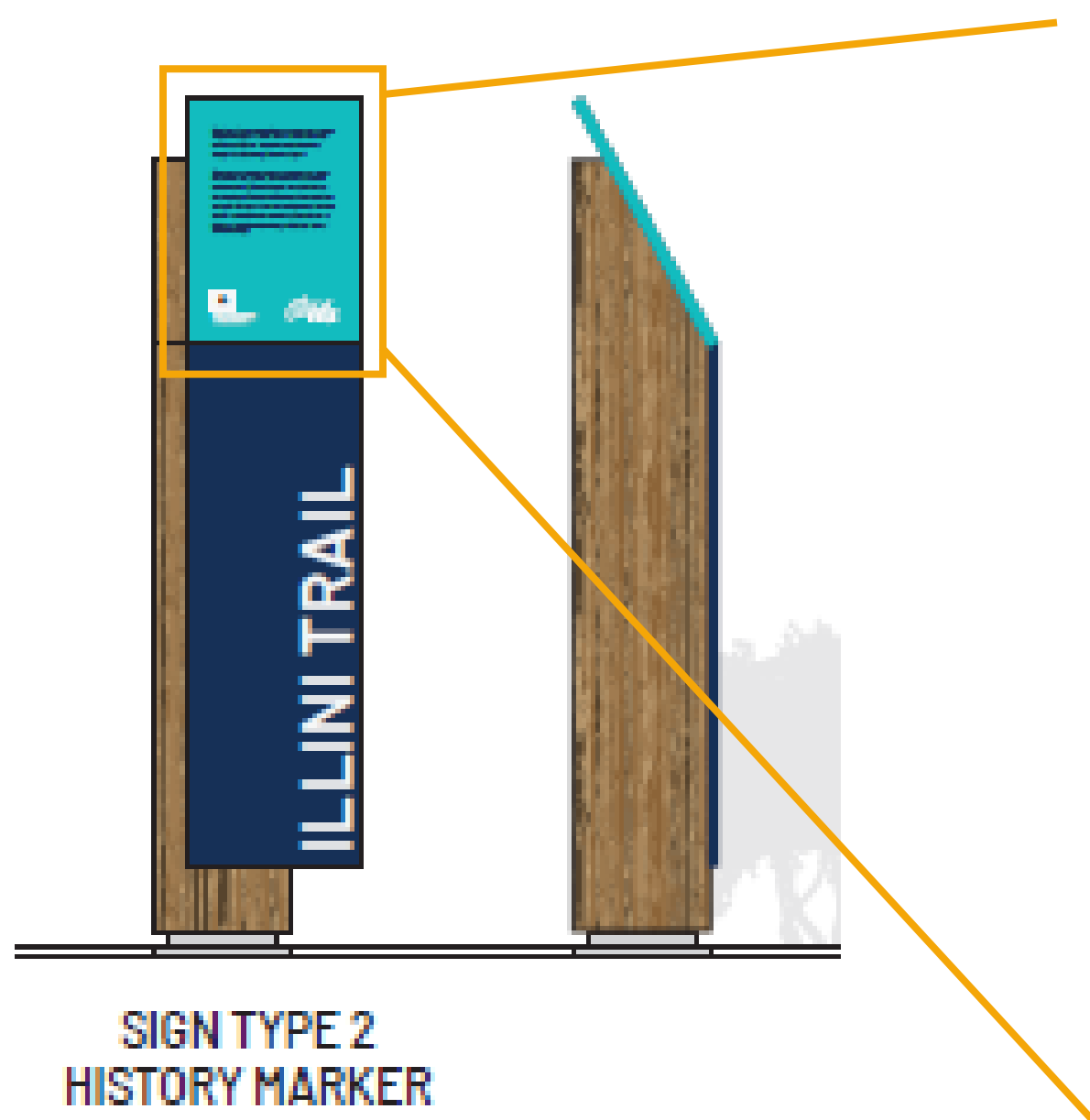
Sign Detail

Sign Content

Sign

Sign Type 2 : History Marker

sign face 1 : facing east towards lincoln avenue

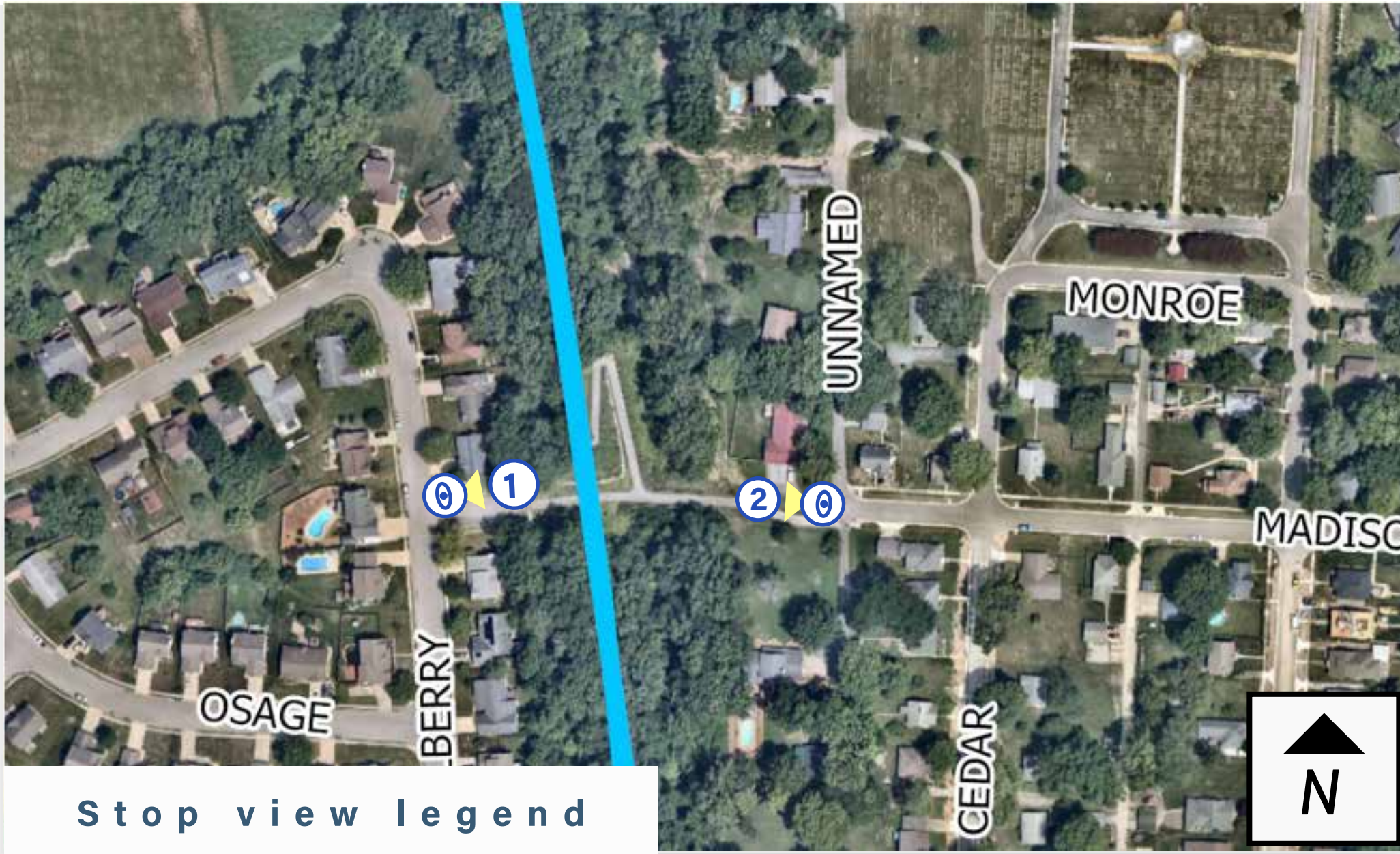


10" w x 13" H

REFER TO SIGN NARRATIVE #3
In "Sign Narratives" File

O'Fallon Bike Master Plan:

Illini Trails Sign Locations



Madison and Illini Trails

2 signs

1 : Sign type 5

2 : Sign type 5



View 1: Madison Ave and Illini Trail, looking east



View 2: Madison Ave and Illini Trail, looking west



Sign Type 5: Monument Signage

O'Fallon Bike Master Plan:

Illini Trails Sign Locations



Madison and Illini Trails

1 sign

Sign 1: Sign type 5



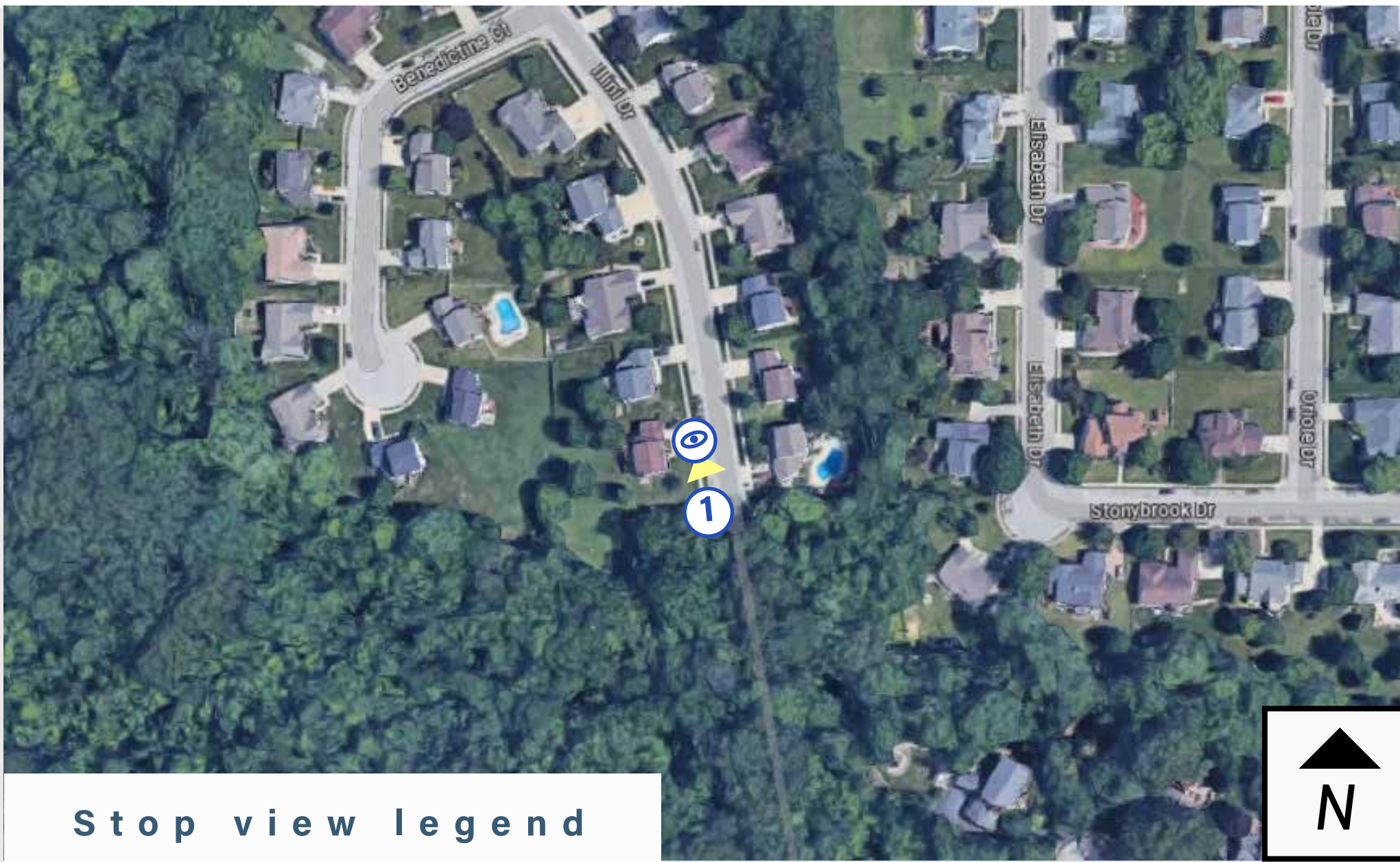
View 1: Hesse Park and Illini Trail, looking east



Sign Type 5: Monument Signage

O'Fallon Bike Master Plan:

Illini Trails Sign Locations



Illini Trails re-entry

1 sign

Sign 1: Sign type 5



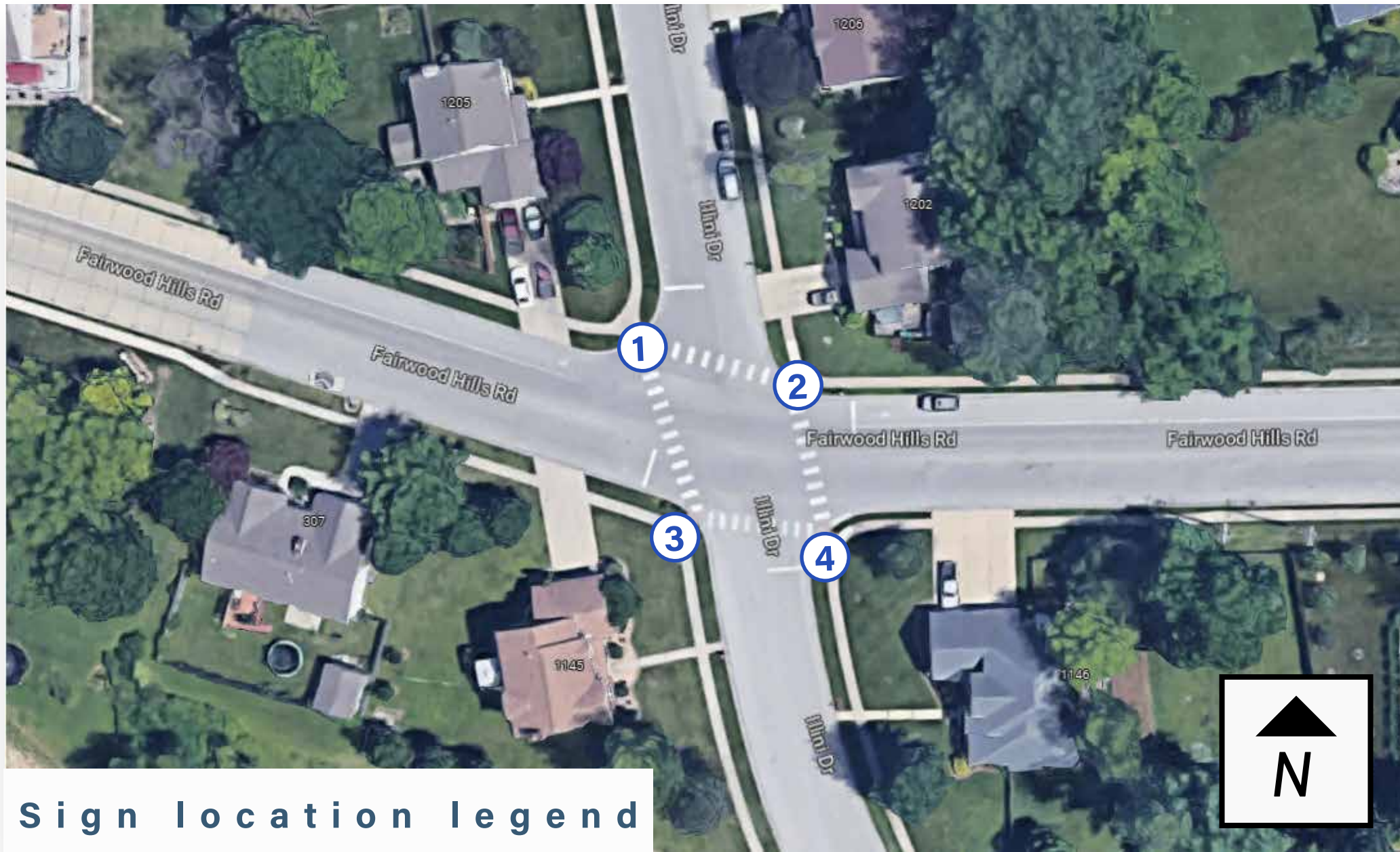
View 1: Illini Trail, looking south



Sign Type 5: Monument Signage

O'Fallon Bike Master Plan:

Illini Trails Sign Locations



Fairwood Hills Road and Illini Trails

4 signs

All 4 signs are sign type 4 "Directional on Existing" Signs

Direction Style Types

Sign 1 : Sign type 3
Sign style: single direction

Sign 4: Sign type 3
Sign style: single direction



Single Direction style

Sign 2 : Sign type 3
Sign style: Bi-directional

Sign 3 : Sign type 3
Sign style: Bi-directional



Bi-directional style



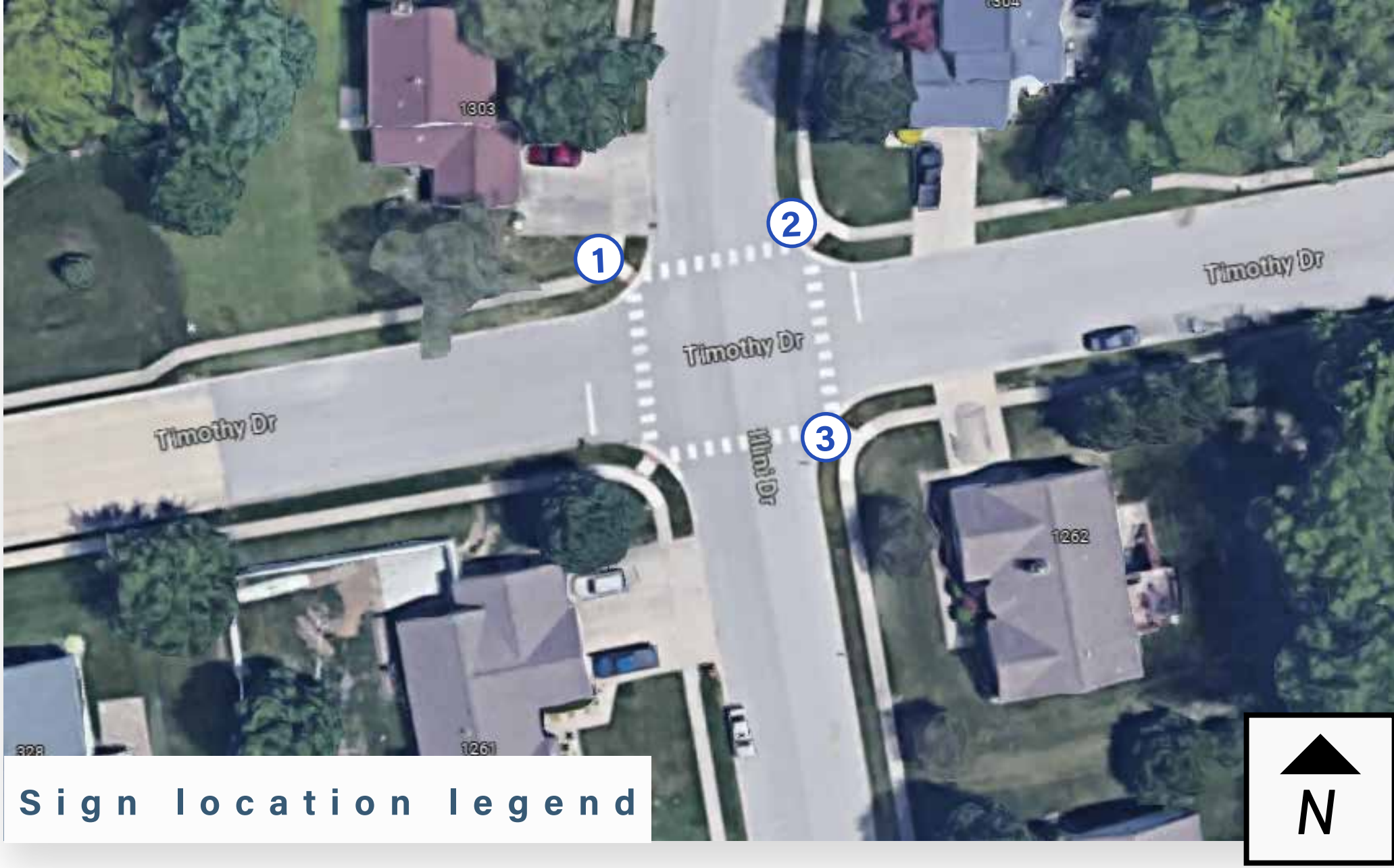
Example: Sign 3. Fairwood Hills Road Ave and Illini Trail, looking east



Sign Type 4: Directional sign on existing Signage

O'Fallon Bike Master Plan:

Illini Trails Sign Locations



Timothy Drive and Illini Trails

4 signs

All 4 signs are sign type 4 "Directional on Existing" Signs

Direction Style Types

Sign 1 : Sign type 3
Sign style: single direction

Sign 4: Sign type 3
Sign style: single direction



Single Direction style

Sign 2 : Sign type 3
Sign style: Bi-directional

Sign 3 : Sign type 3
Sign style: Bi-directional



Bi-directional style



Example: Sign 3. Timothy Drive and Illini Trail, looking north



Sign Type 4: Directional sign on existing Signage

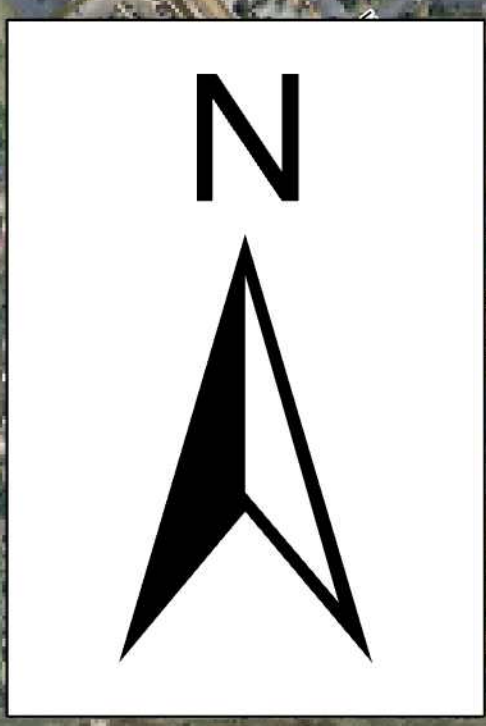
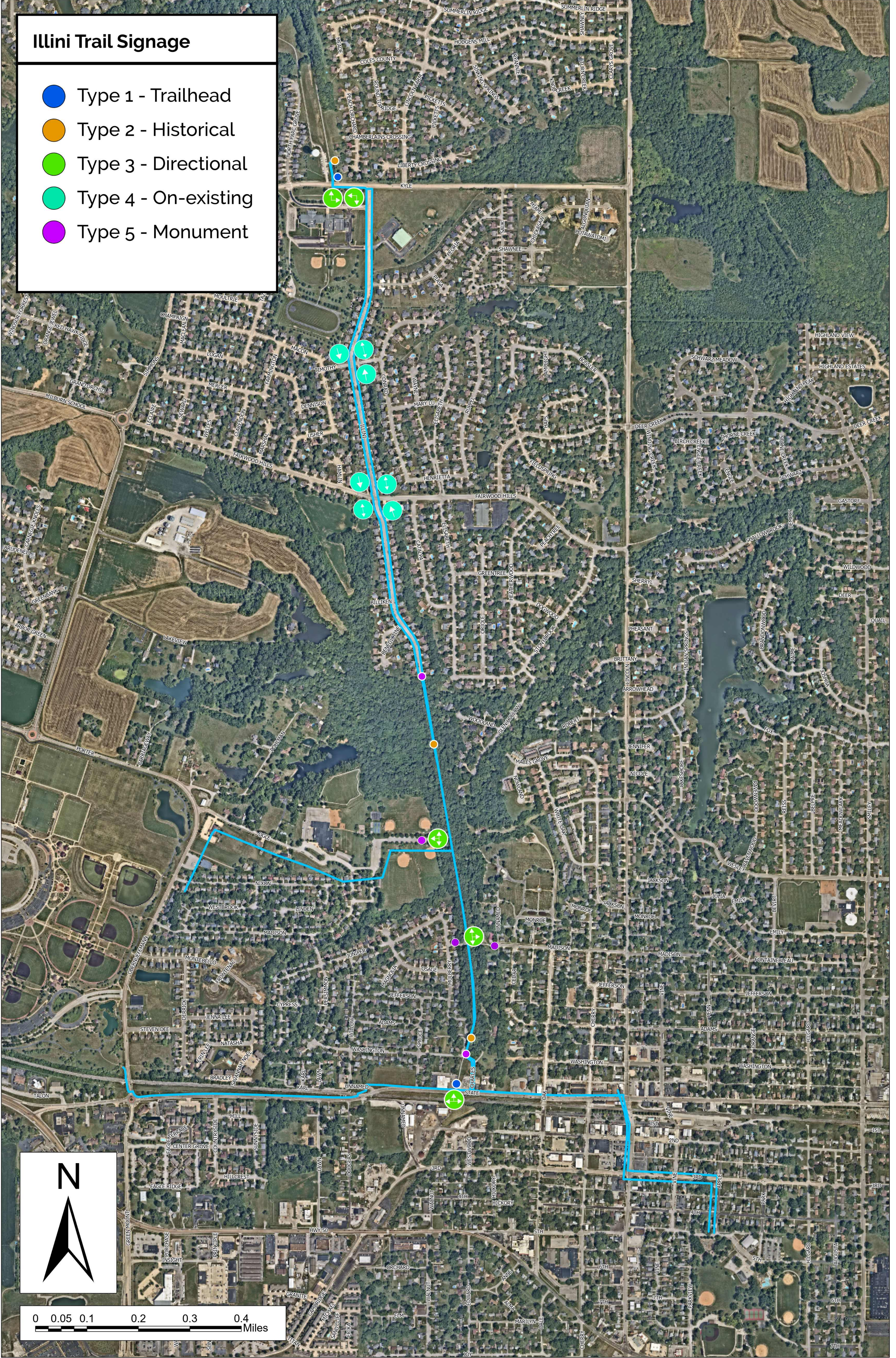
APPENDIX B

MAP OF SIGN LOCATIONS

(Remainder of Page Intentionally Left Blank)

Illini Trail Signage

- Type 1 - Trailhead
- Type 2 - Historical
- Type 3 - Directional
- Type 4 - On-existing
- Type 5 - Monument



APPENDIX C

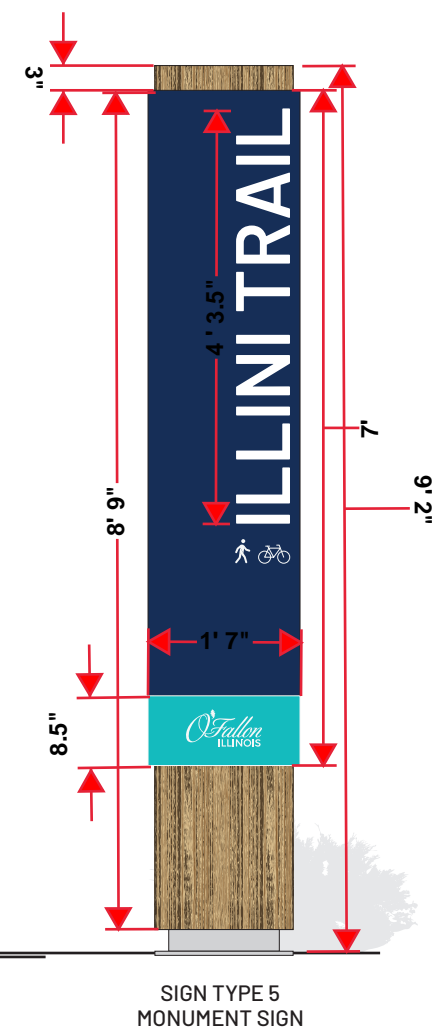
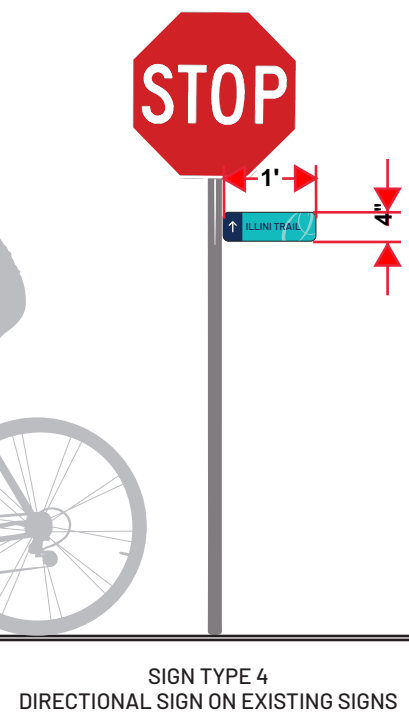
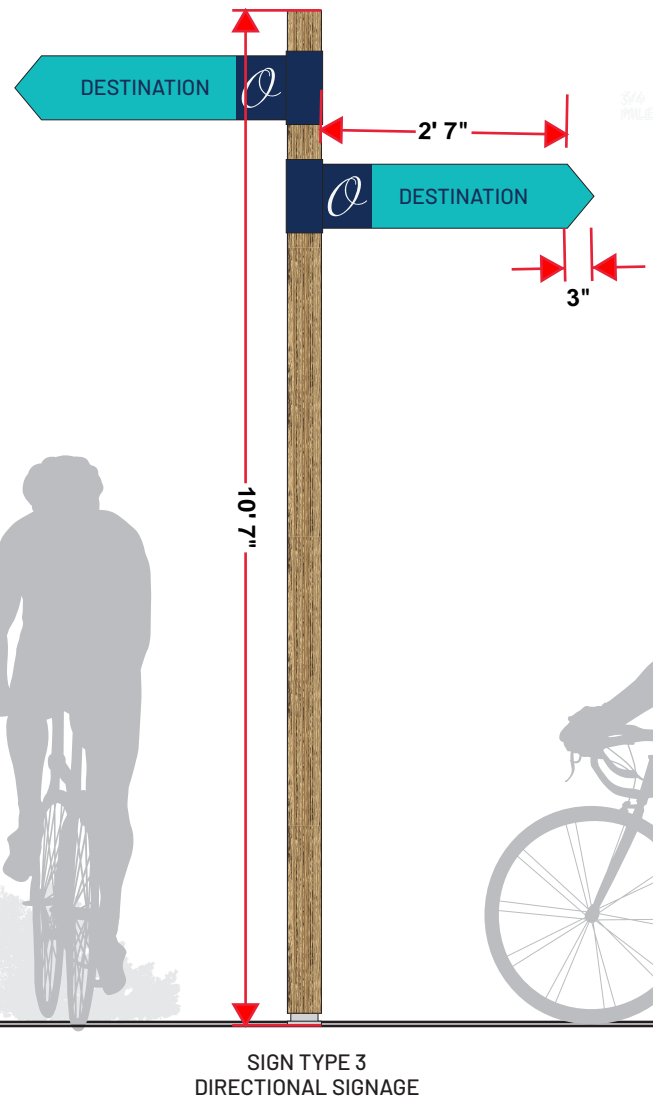
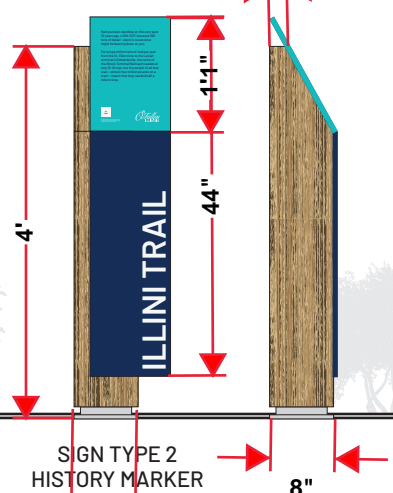
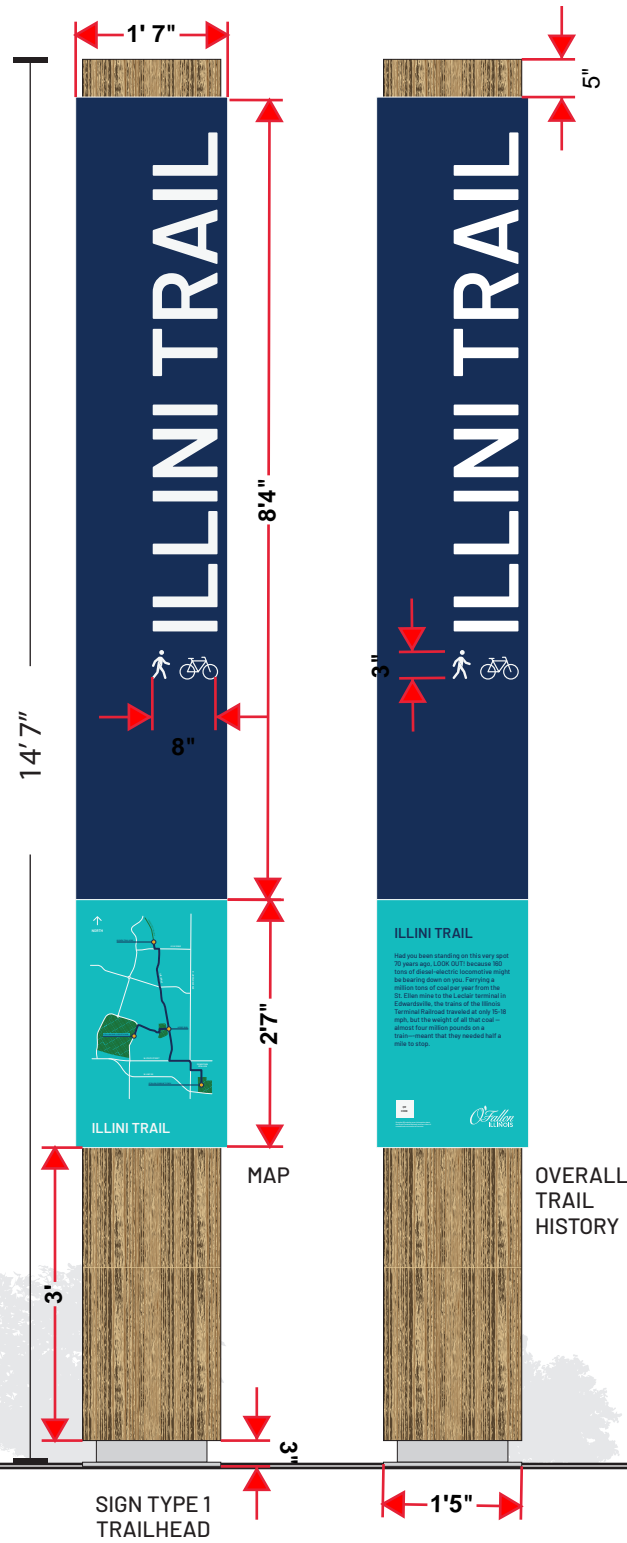
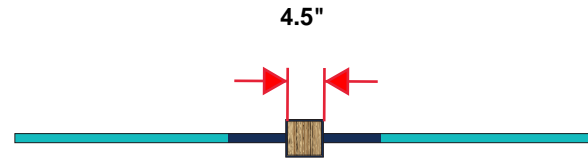
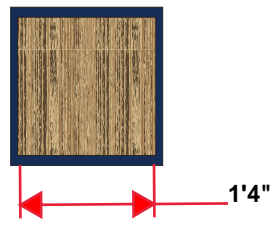
SIGN SPECIFICATIONS

(Remainder of Page Intentionally Left Blank)

Disclaimer: Fabricator may offer sign sizing recommendations, subject to approval by City of O'Fallon Staff

1/2"=1' scale

PLAN VIEW



SIGN TYPE 1 TRAILHEAD

SIGN TYPE 2 HISTORY MARKER

SIGN TYPE 3 DIRECTIONAL SIGNAGE

SIGN TYPE 4 DIRECTIONAL SIGN ON EXISTING SIGNS

SIGN TYPE 5 MONUMENT SIGN

Sign Narratives file

Sign Narrative #1: SIGN BY THE WATER TOWER

Had you been standing on this very spot 70 years ago, LOOK OUT! because 160 tons of diesel-electric locomotive might be bearing down on you. Ferrying a million tons of coal per year from the St. Ellen mine to the Leclair terminal in Edwardsville, the trains of the Illinois Terminal Railroad traveled at only 15-18 mph, but the weight of all that coal – almost four million pounds on a train—meant that they needed half a mile to stop.

Sign Narrative #2: SIGN AT THE ENTRANCE AT STATE STREET

Railroads were foundational to O'Fallon's early success. The Illinois Terminal Railway, whose rail bed you're now standing on, ferried coal from O'Fallon's mines to the wider world. (A siding on the Baltimore and Ohio line, a couple of blocks to the west of where you're standing, let rail cars filled with grain from O'Fallon's farms travel east and west.) Begun in 1926, completed in 1929, finally pulled up in the 1990's, these tracks brought fuel to factories, warmth to homes, and prosperity to O'Fallon.

Sign Narrative #3: SIGN NEAR ILLINI DRIVE

"More powerful than a locomotive" was Superman in the old show, and that was an apt definition of raw strength. The trains that pulled coal cars along the tracks that lay along the trail you are now standing on were powered by 160-ton GP7 diesel-electrics, rated at 2,000 HP. They were strong enough to haul twenty-five cars, each loaded with 75 tons of coal. They carried coal, but they burned diesel to power generators that sent electricity to motors, one on each of three axles; in other words, they were hybrids before hybrids were cool.

[all of the signs would also have a note something like the following:]

For more information about the Illinois Terminal Railroad, and for a video of a model train re-creation of its route, scan the QR code below—